

# THIRD FLOOR PLANS

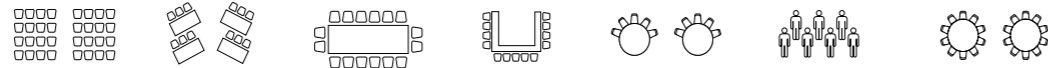
MEETINGS & EVENTS AT RADISSON BLU EDWARDIAN, HEATHROW



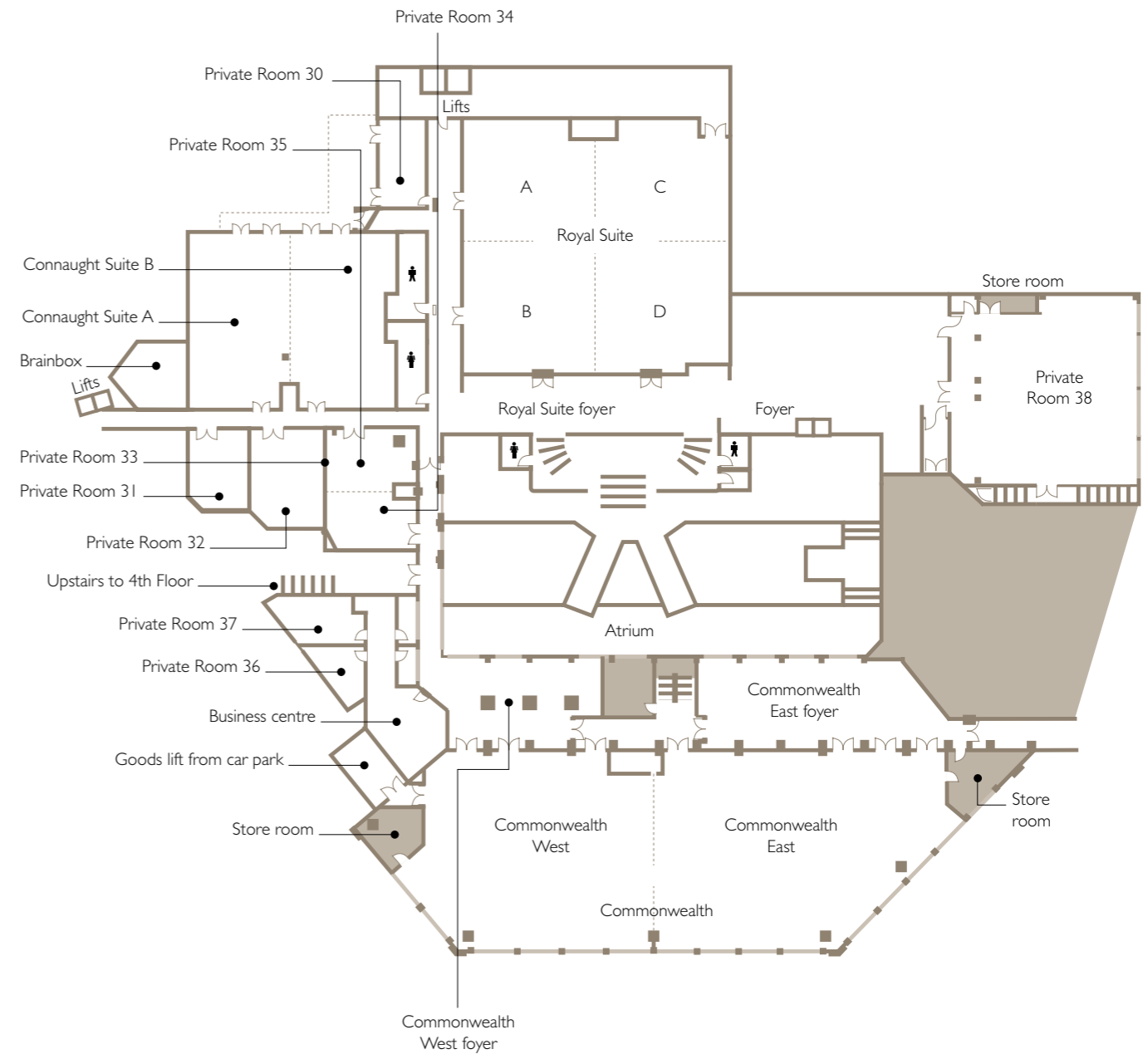
e: htrwcb@radisson.com  
 t: +44 (0)20 8757 7903

# THIRD FLOOR

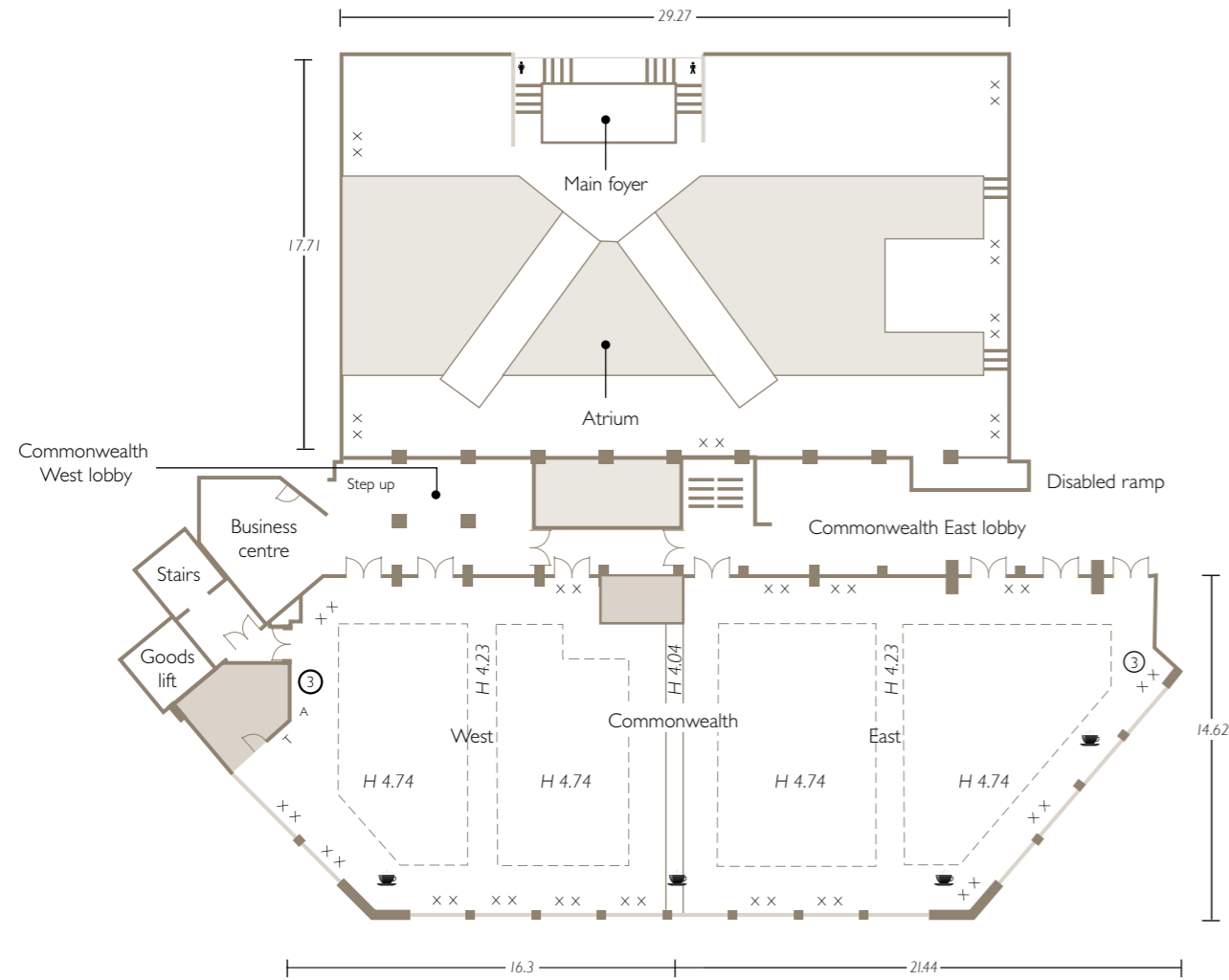
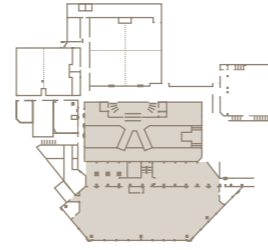
## GUIDELINE CAPACITIES



NAME OF ROOM	THEATRE	CLASSROOM	BOARDROOM	U-SHAPE	CABARET	RECEPTION	LUNCH/DINNER
ATRIUM	-	-	-	-	-	500	-
COMMONWEALTH SUITE	700	350	-	-	400	700	550
COMMONWEALTH EAST	400	130	-	-	180	400	250
COMMONWEALTH WEST	300	130	-	-	150	300	250
ROYAL	300	100	-	-	120	450	250
ROYAL A	50	32	24	20	40	60	50
ROYAL B	50	32	24	20	40	60	50
ROYAL C	50	32	24	20	40	60	50
ROYAL D	50	32	24	20	40	60	50
CONNAUGHT	150	60	42	42	100	150	120
CONNAUGHT A	60	30	25	30	50	60	50
CONNAUGHT B	60	30	25	30	50	60	50
PRIVATE ROOM 30	-	-	8	-	-	-	-
PRIVATE ROOM 31	-	-	12	-	-	-	10
PRIVATE ROOM 32	50	25	25	18	24	40	30
PRIVATE ROOM 33	50	25	25	25	24	40	30
PRIVATE ROOM 34	15	10	12	8	-	-	12
PRIVATE ROOM 35	15	10	12	8	-	-	12
PRIVATE ROOM 36	-	-	4	-	-	-	-
PRIVATE ROOM 37	-	-	10	-	-	-	-
PRIVATE ROOM 38	100	50	45	35	70	125	100
THE BRAINBOX			15				

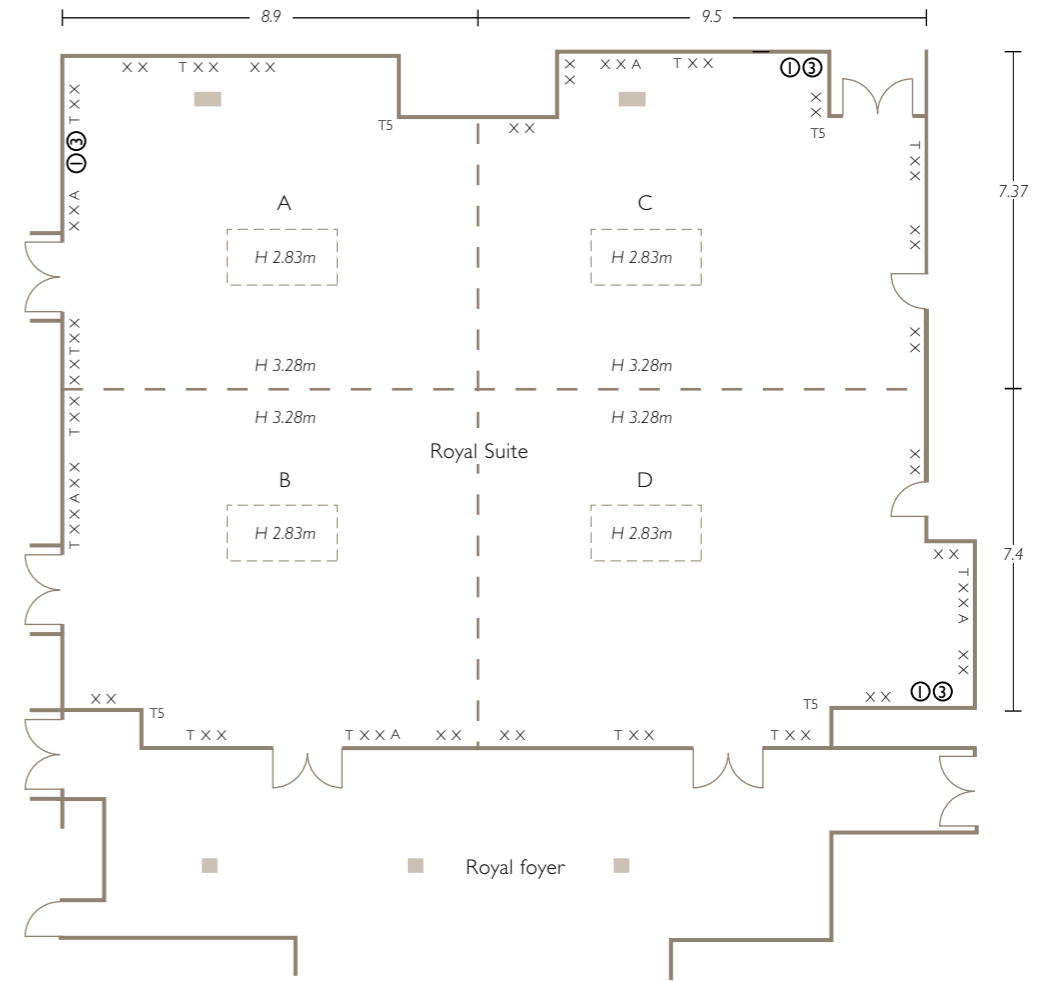
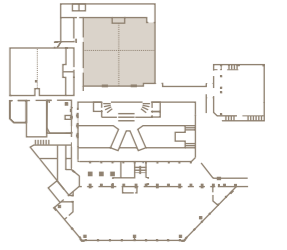


# COMMONWEALTH SUITE & ATRIUM



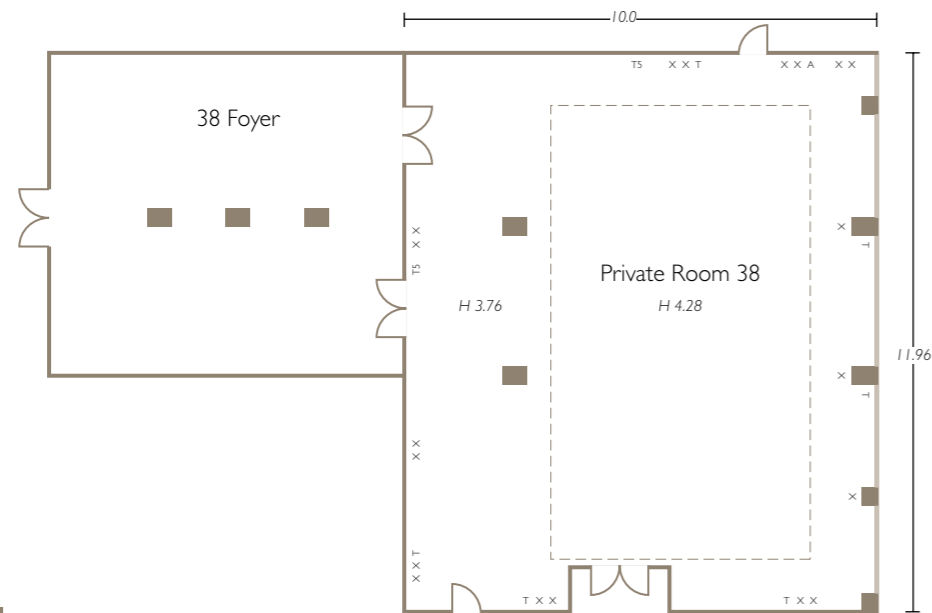
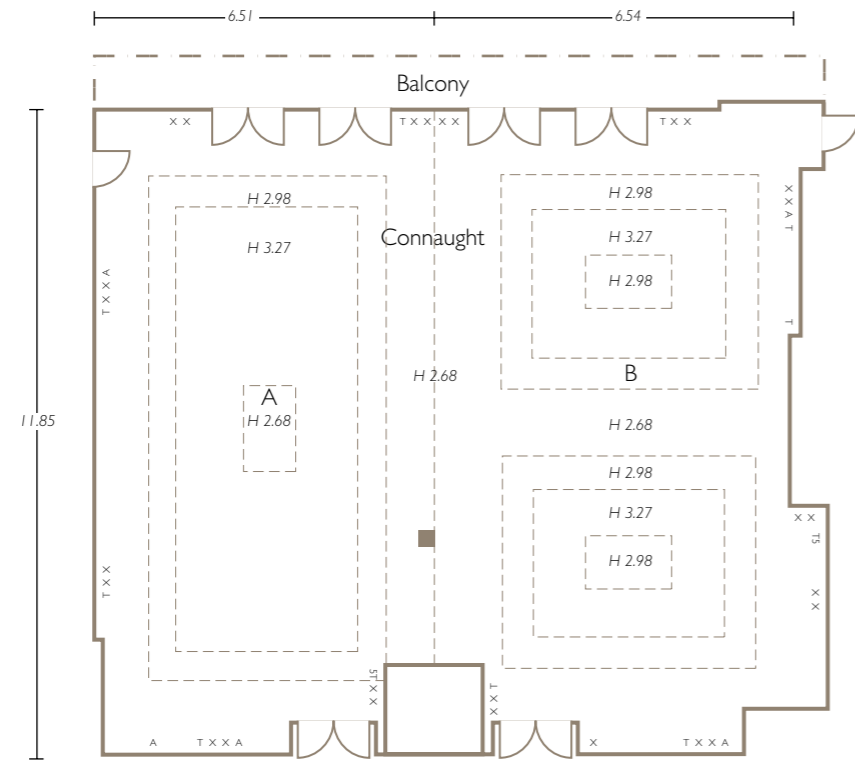
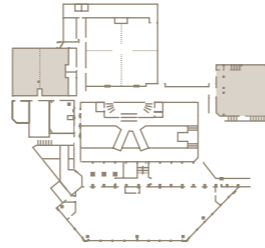
Key	
T	= Telephone
X	= 13 amp socket
A	= TV aerial
T5	= Data access point
⓪	= Three phase (125A) commando socket

# ROYAL SUITE (A – D)



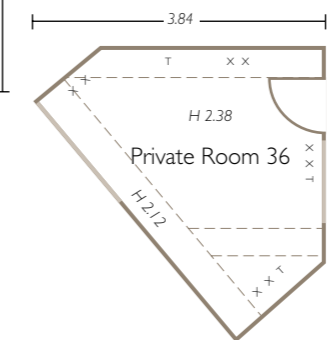
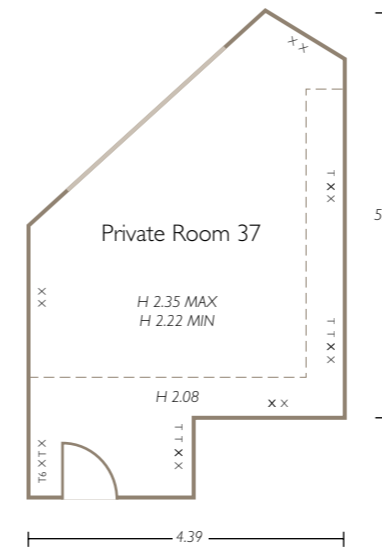
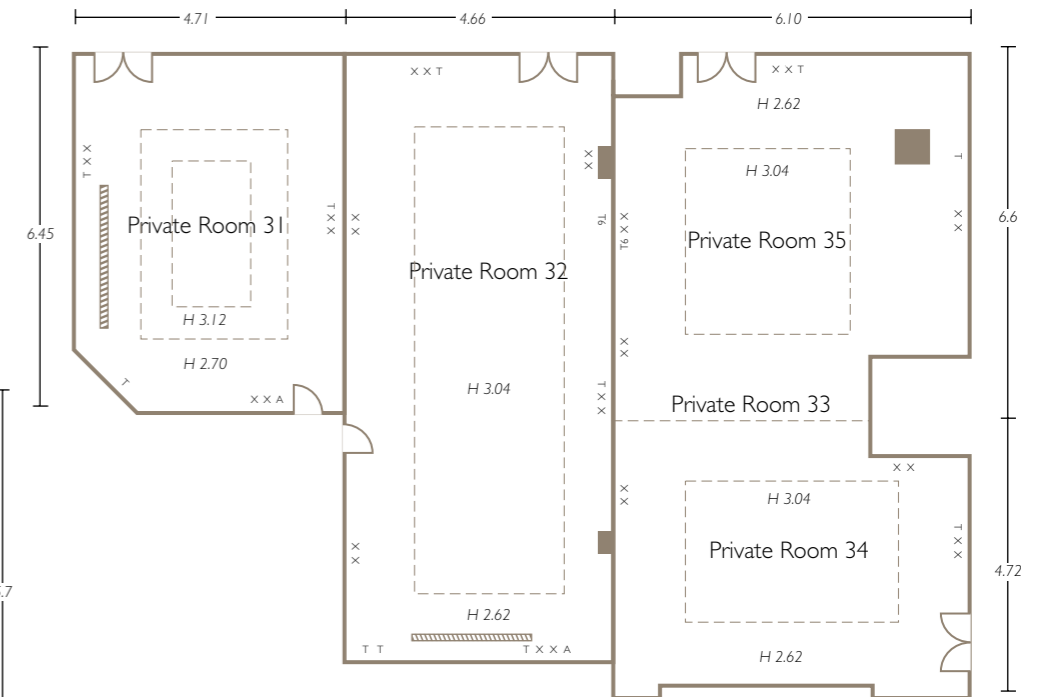
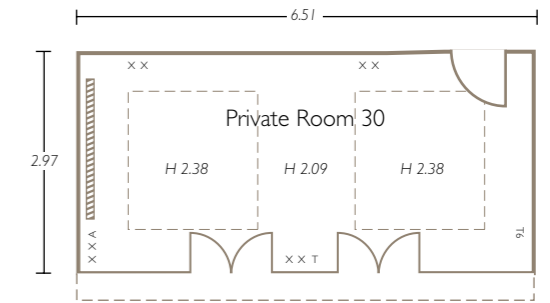
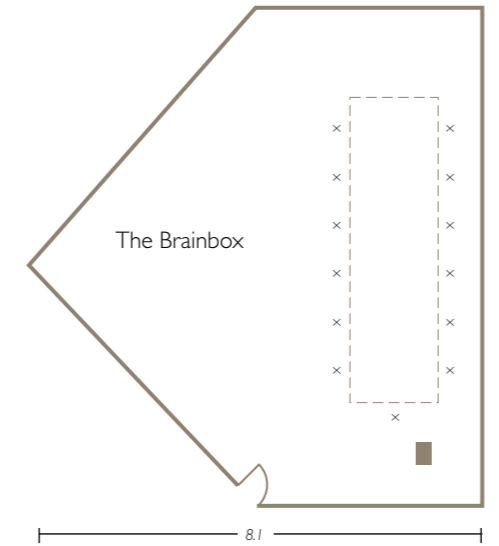
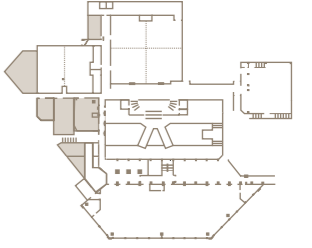
Key	
T	= Telephone
X	= 13 amp socket
A	= TV aerial
T5	= Data access point
⓪	= Single phase (32A) commando socket
Ⓛ	= Three phase (32A) commando socket

# CONNAUGHT SUITE (A & B) PRIVATE ROOM 38



Key	
T	= Telephone
X	= 13 amp socket
A	= TV aerial
T5	= Data access point

# PRIVATE ROOMS 30 – 37 & THE BRAIN BOX



Radisson Blu Edwardian, Heathrow ★★★★★ 140 Bath Road, Hayes, Middlesex UB3 5AW  
t: +44 (0)20 8757 7903 e: [htrwcb@radisson.com](mailto:htrwcb@radisson.com) [radissonblu-edwardian.com/heathrow](http://radissonblu-edwardian.com/heathrow)