



THE LONDONER  
LEICESTER SQ.

# The Gallery Floorplan

# THE SPACES AT A GLANCE

---

50 WHITCOMB'S  
GFL

---

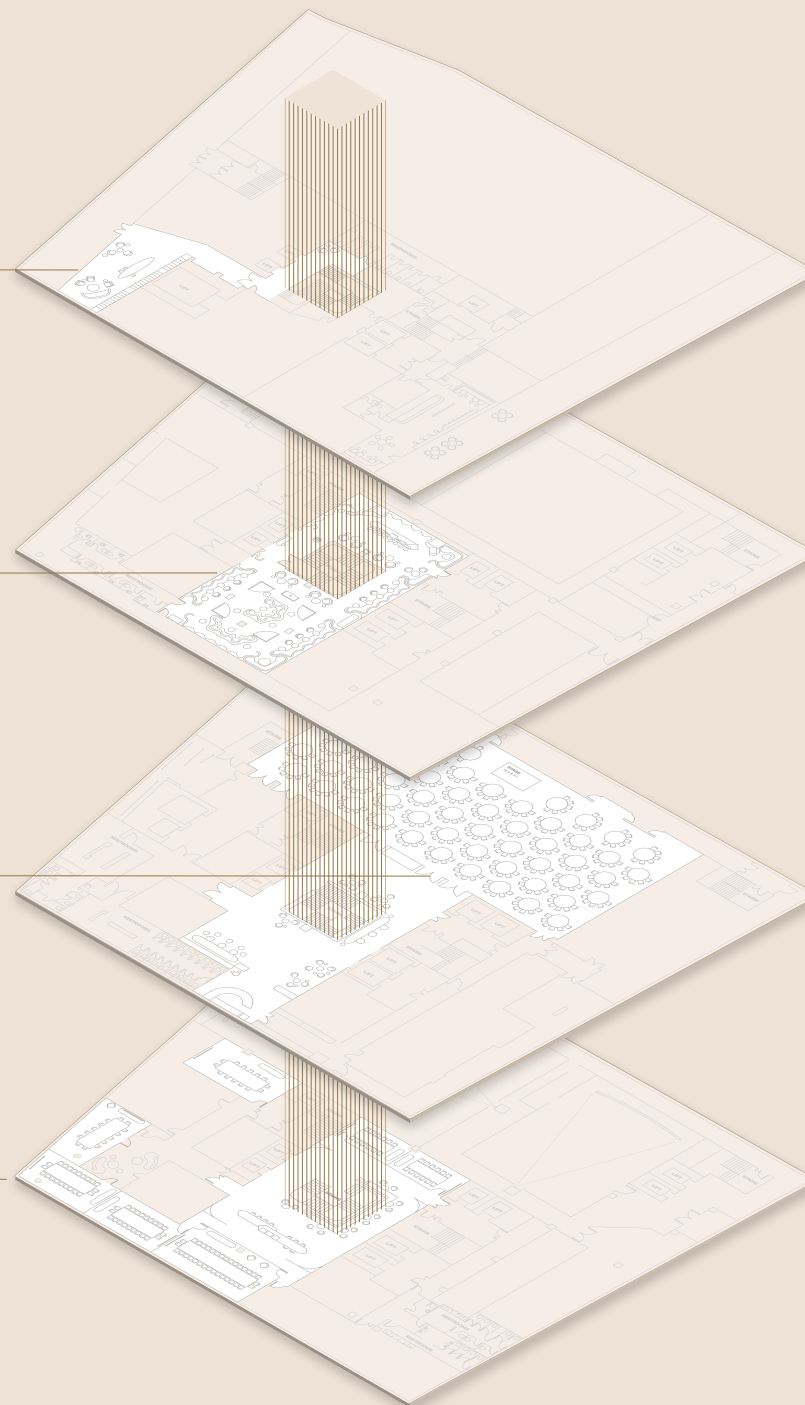
THE GREEN ROOM  
B1

---

THE BALLROOM  
B2

---

THE GALLERY  
B3



# THE GALLERY

## CAPACITIES

	Theatre	Classroom	Boardroom	U-shape	Cabaret	Lunch/Dinner	Reception
The National Gallery	20	8	8	-	8	8	22
Somerset House	20	8	8	-	8	8	22
The National Gallery + Somerset House	48	21	16	27	18	24	44
Royal Academy of Arts	64	36	30	28	24	32	60
Tate Britain	30	24	20	20	16	24	38
Hayward Gallery	30	21	20	16	16	24	38
Tate Britain + Hayward Gallery	82	56	40	44	32	48	76
Serpentine Gallery	-	-	16	-	-	-	-
Maddox Gallery	-	-	16	-	-	-	-

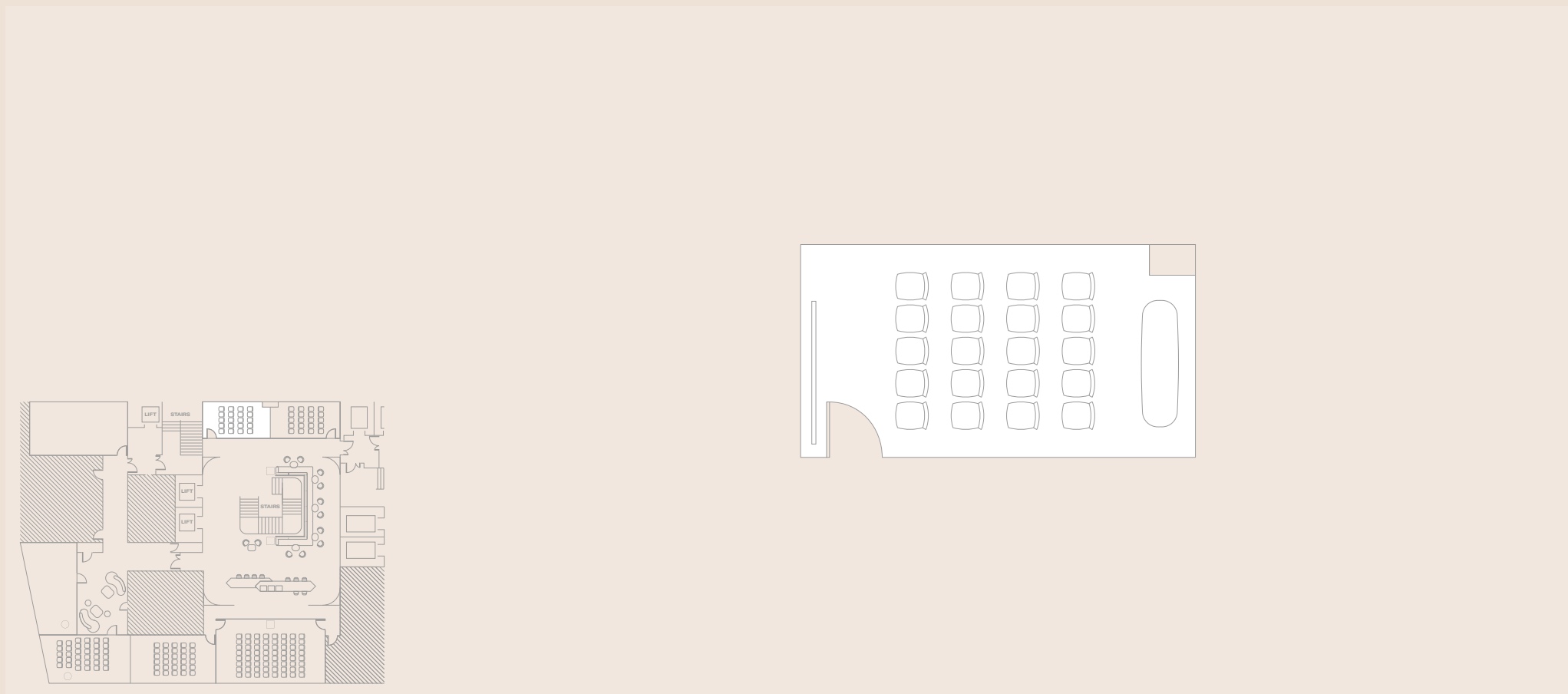
## DIMENSIONS

	Area		Length		Width		Height	
	sq. m	sq. ft	m	ft	m	ft	m	ft
The National Gallery	20	215	6.2	20' 4"	3.2	10' 6"	3.5	11' 6"
Somerset House	20	215	6.4	21'	3.2	10' 6"	3.5	11' 6"
The National Gallery + Somerset House	40	431	12.6	41' 4"	3.2	10' 6"	3.5	11' 6"
Royal Academy of Arts	54	581	9.9	32' 6"	5.8	19'	3.5	11' 6"
Tate Britain	34	366	7.9	25' 11"	4.2	13' 9"	3.5	11' 6"
Hayward Gallery	34	366	7.9	25' 11"	4.2	13' 9"	3.5	11' 6"
Tate Britain + Hayward Gallery	68	732	15.8	51' 10"	4.2	13' 9"	3.5	11' 6"
Serpentine Gallery	35	377	8.4	27' 7"	4.3	14' 1"	3.5	11' 6"
Maddox Gallery	39	420	8.9	29' 2"	4.6	15' 1"	3.5	11' 6"

## BREAKOUT AREAS

	Standing	sq.m	sq.ft	Length		Width		Height	
				m	ft	m	ft	m	ft
Gallery Foyer	170	162	1,744	16. 8	55'	12.4	40' 6"	3.5	11' 5"
Gallery	220	256	2,756	25.8	84' 5"	12.4	40' 6"	-	-

# THEATRE

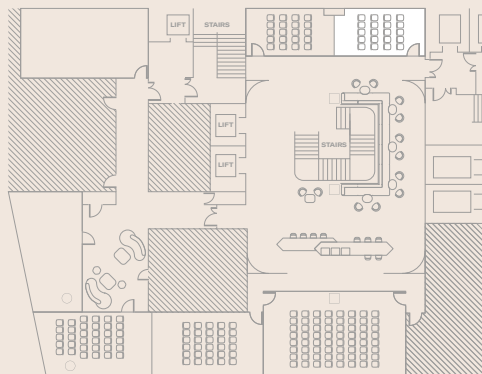


THE NATIONAL GALLERY

20 capacity

For more room layouts tailored to your event,  
please email [events@thelondoner.com](mailto:events@thelondoner.com)

# THEATRE

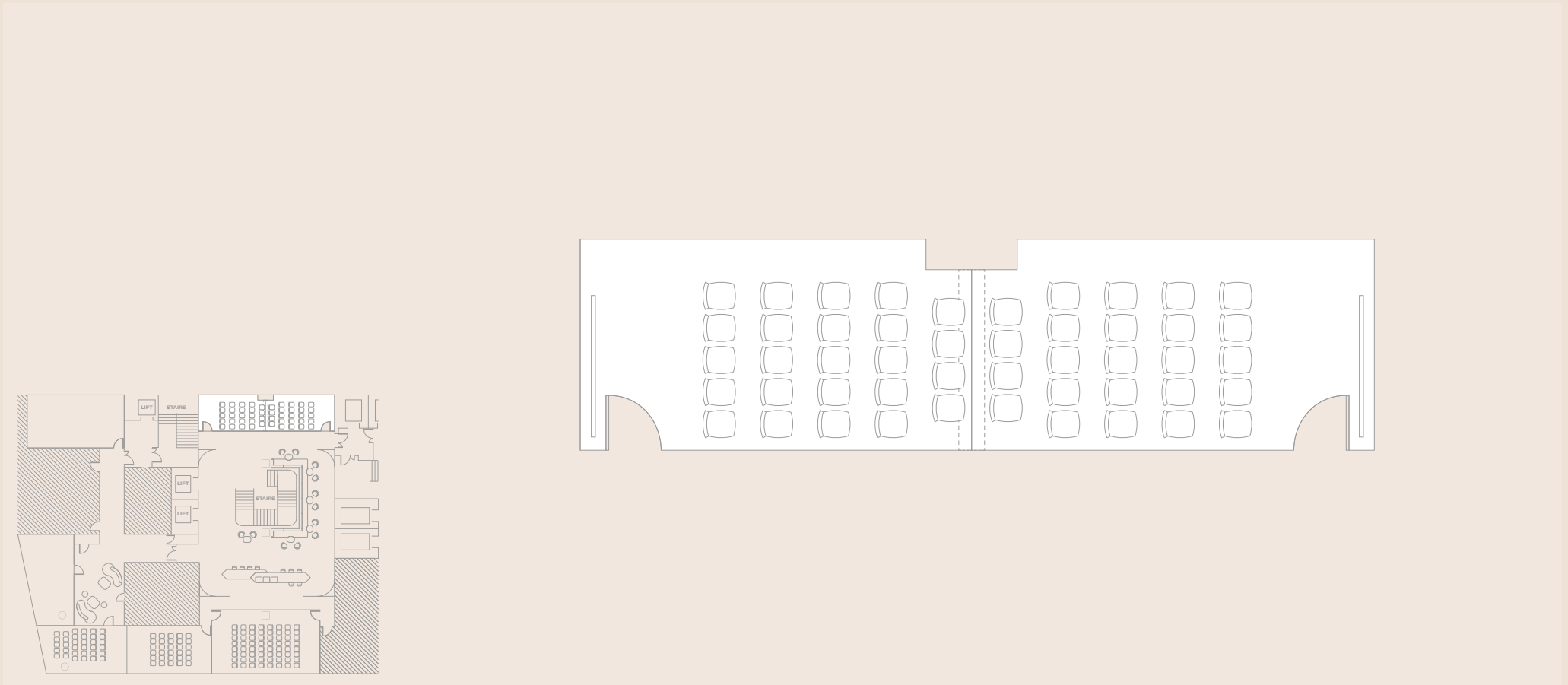


SOMERSET HOUSE

20 capacity

For more room layouts tailored to your event,  
please email [events@thelondoner.com](mailto:events@thelondoner.com)

# THEATRE

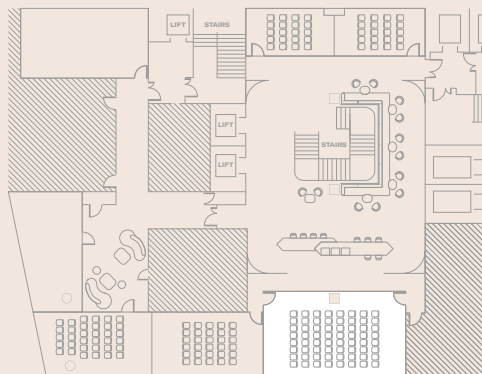
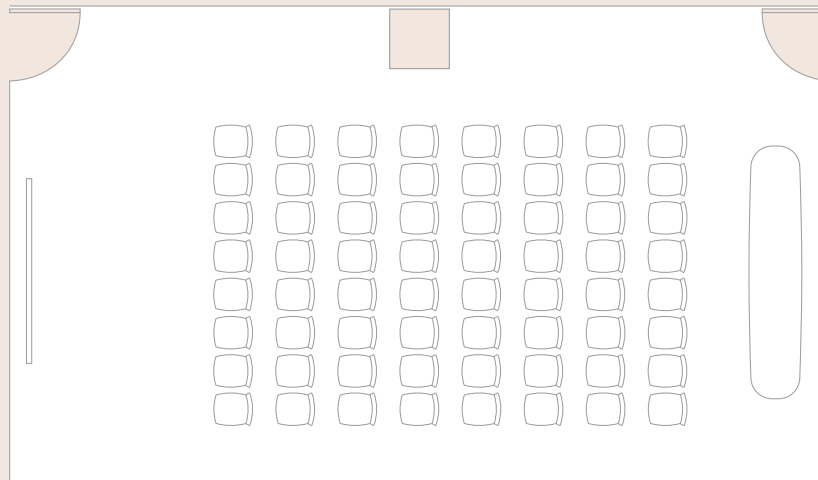


THE NATIONAL GALLERY  
AND SOMERSET HOUSE

48 capacity

For more room layouts tailored to your event,  
please email [events@thelondoner.com](mailto:events@thelondoner.com)

# THEATRE

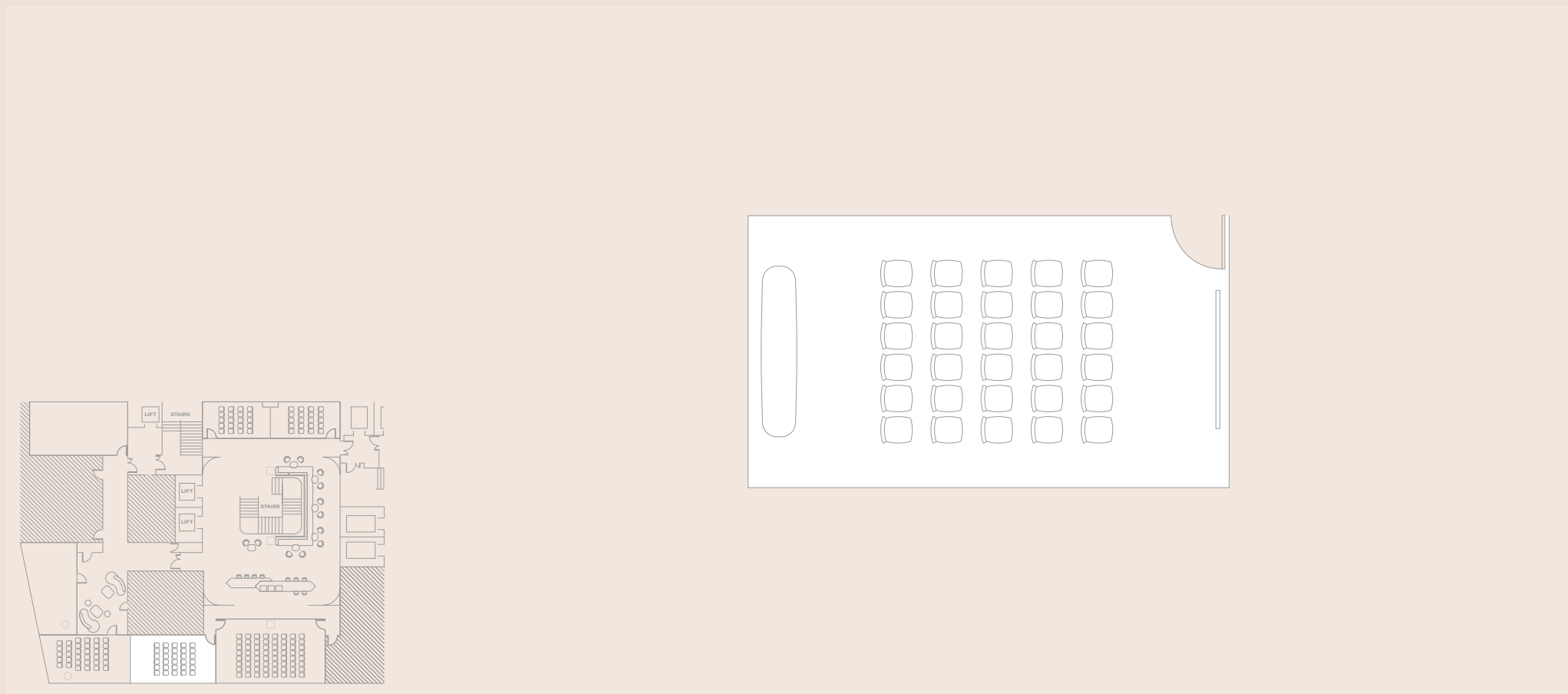


ROYAL ACADEMY OF ARTS

64 capacity

For more room layouts tailored to your event,  
please email [events@thelondoner.com](mailto:events@thelondoner.com)

# THEATRE



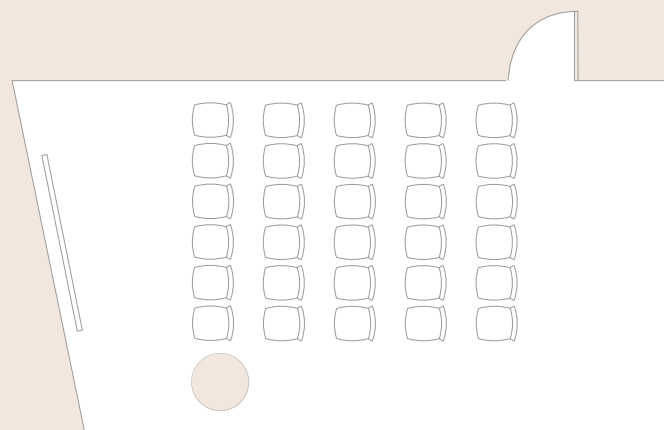
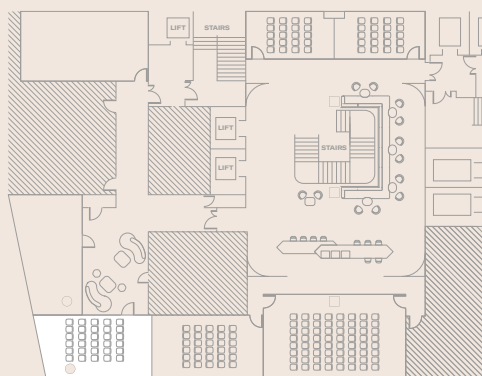
TATE BRITAIN

30 capacity

For more room layouts tailored to your event,  
please email [events@thelondoner.com](mailto:events@thelondoner.com)



# THEATRE

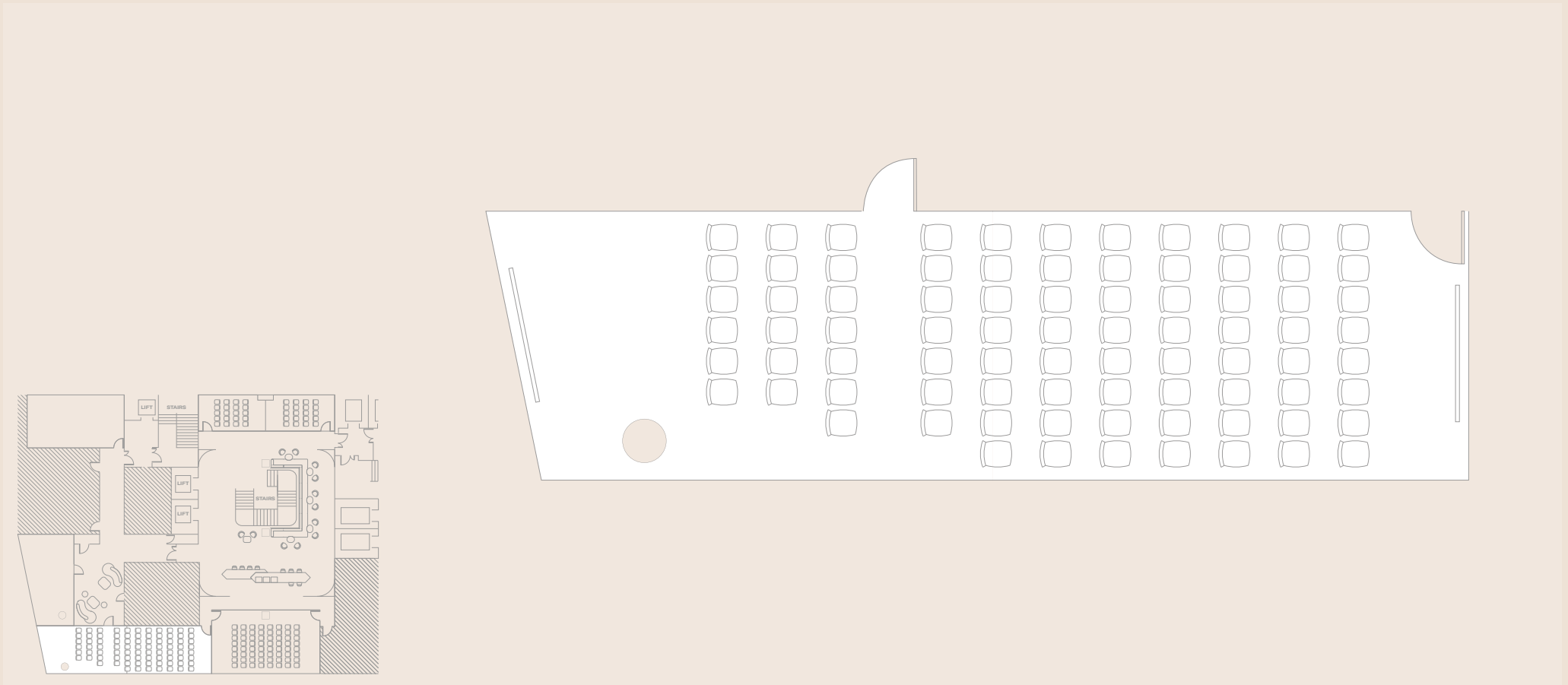


HAYWARD GALLERY

30 capacity

For more room layouts tailored to your event,  
please email [events@thelondoner.com](mailto:events@thelondoner.com)

# THEATRE

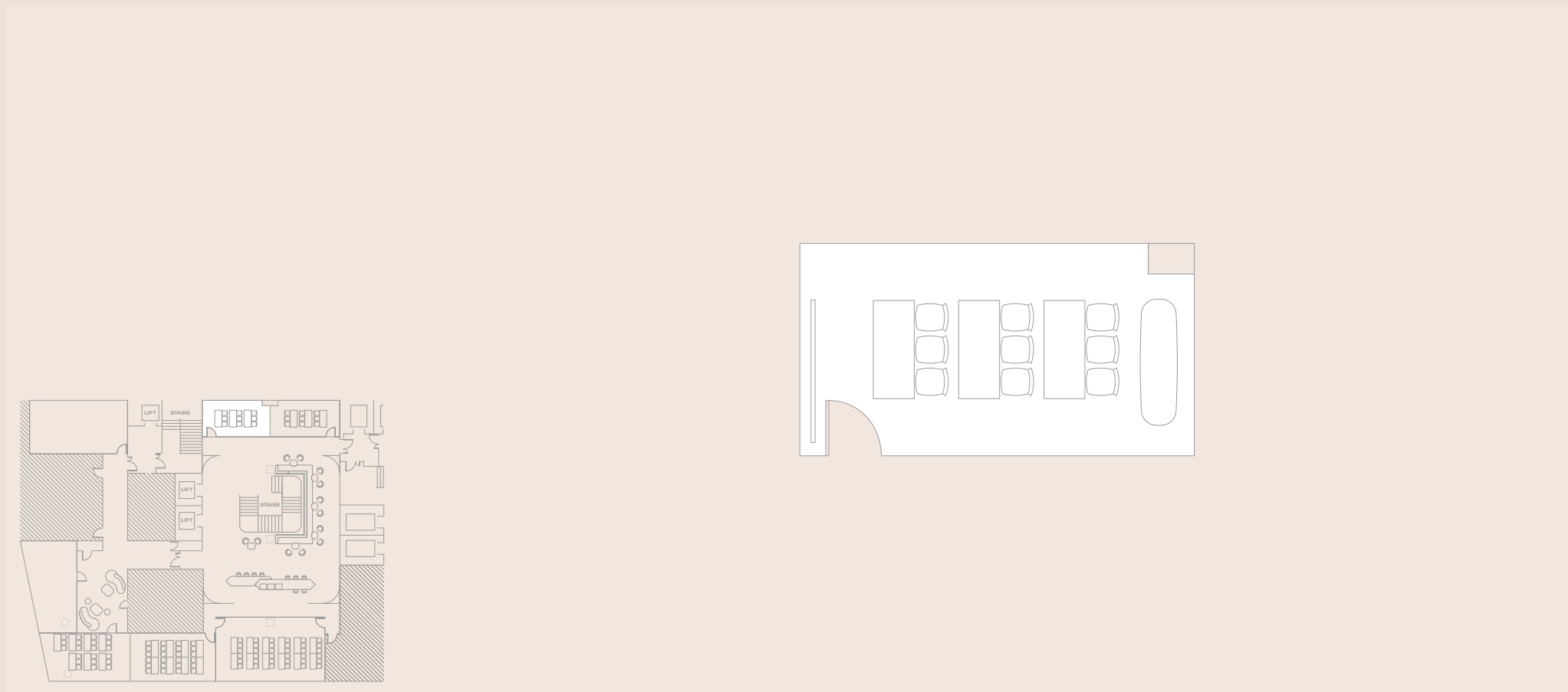


TATE BRITAIN AND  
HAYWARD GALLERY

82 capacity

For more room layouts tailored to your event,  
please email [events@thelondoner.com](mailto:events@thelondoner.com)

# CLASSROOM

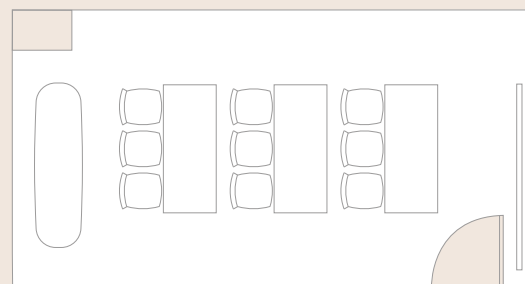
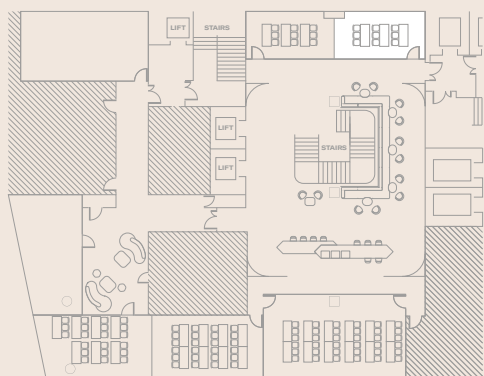


**THE NATIONAL GALLERY**

3 tables  
9 capacity at 3 guests per table

For more room layouts tailored to your event,  
please email [events@thelondoner.com](mailto:events@thelondoner.com)

# CLASSROOM

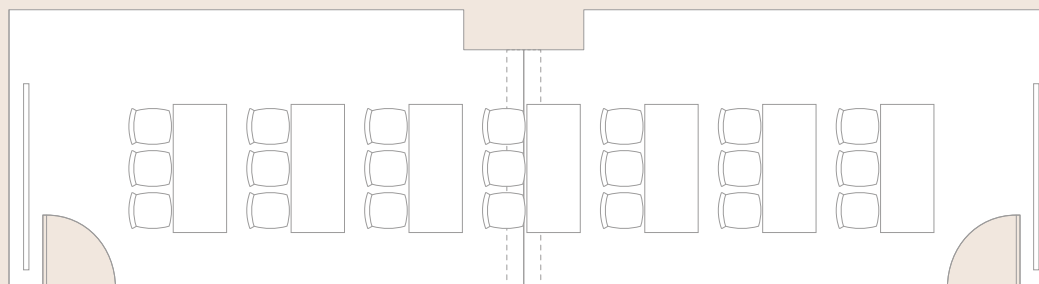
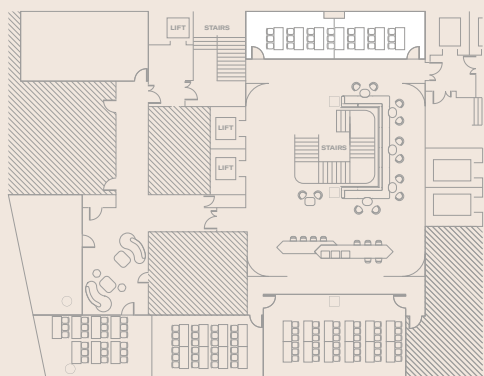


**SOMERSET HOUSE**

3 tables  
9 capacity at 3 guests per table

For more room layouts tailored to your event,  
please email [events@thelondoner.com](mailto:events@thelondoner.com)

# CLASSROOM

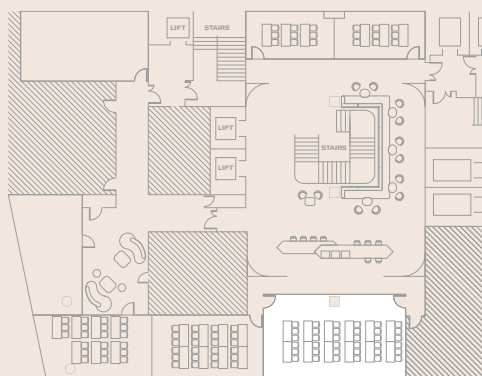
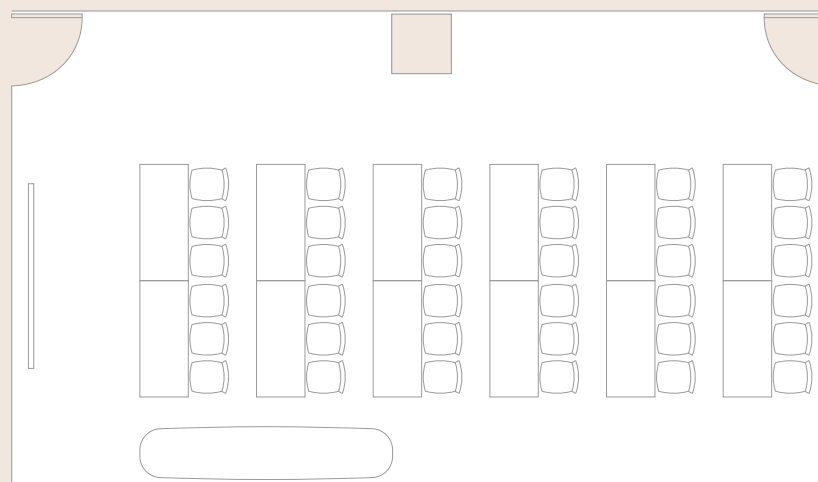


**THE NATIONAL GALLERY  
AND SOMERSET HOUSE**

7 tables  
21 capacity at 3 guests per table

For more room layouts tailored to your event,  
please email [events@thelondoner.com](mailto:events@thelondoner.com)

# CLASSROOM

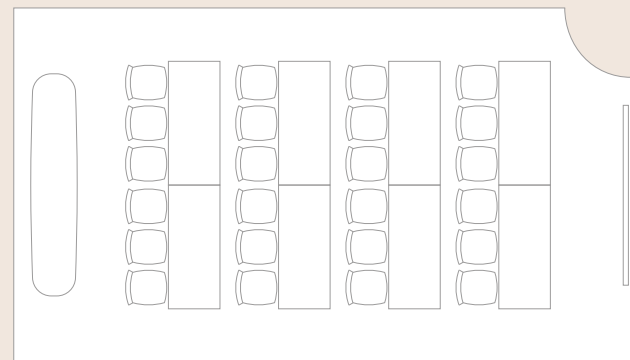
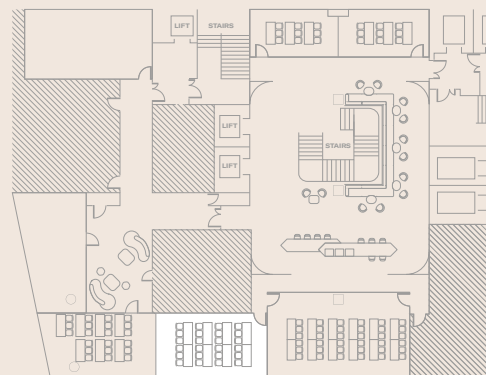


ROYAL ACADEMY OF ARTS

12 tables  
36 capacity at 3 guests per table

For more room layouts tailored to your event,  
please email [events@thelondoner.com](mailto:events@thelondoner.com)

# CLASSROOM

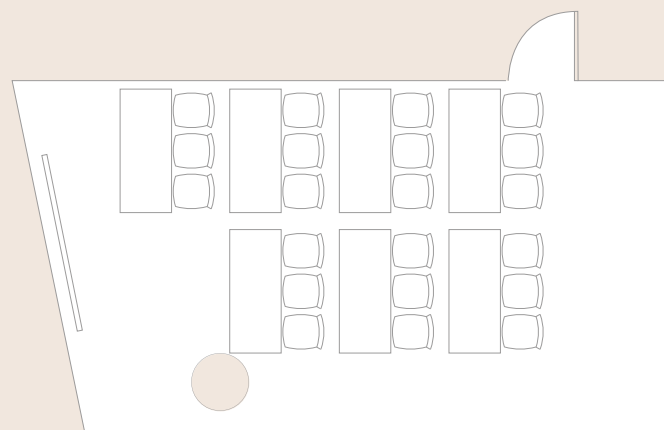
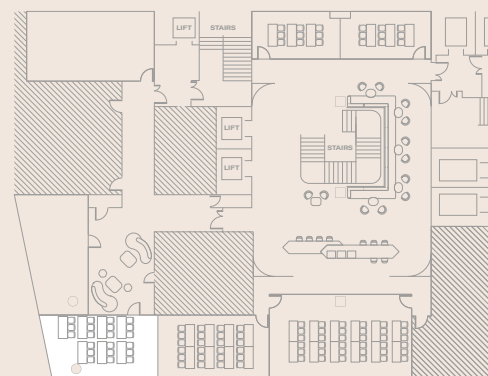


TATE BRITAIN

8 tables  
24 capacity at 3 guests per table

For more room layouts tailored to your event,  
please email [events@thelondoner.com](mailto:events@thelondoner.com)

# CLASSROOM



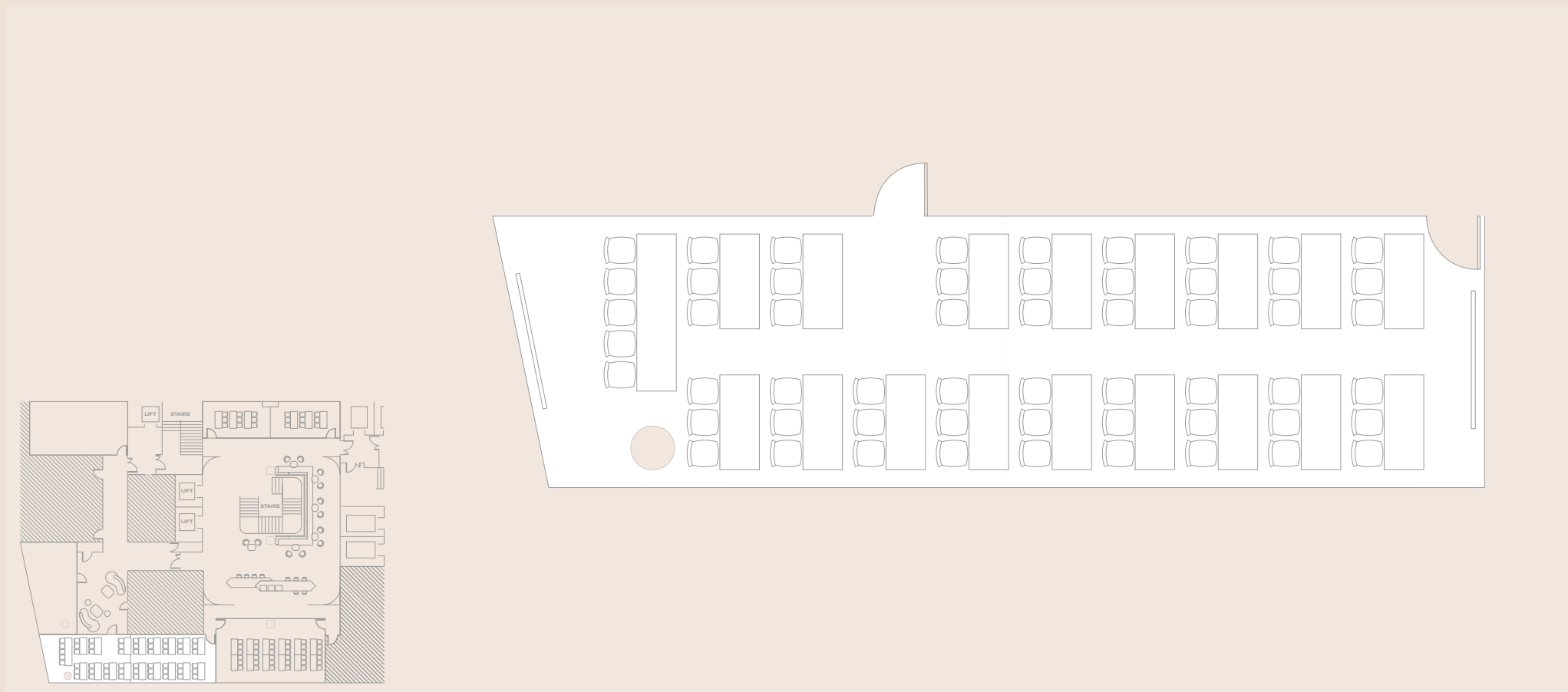
**HAYWARD GALLERY**

7 tables  
21 capacity at 3 guests per table

For more room layouts tailored to your event,  
please email [events@thelondoner.com](mailto:events@thelondoner.com)



# CLASSROOM

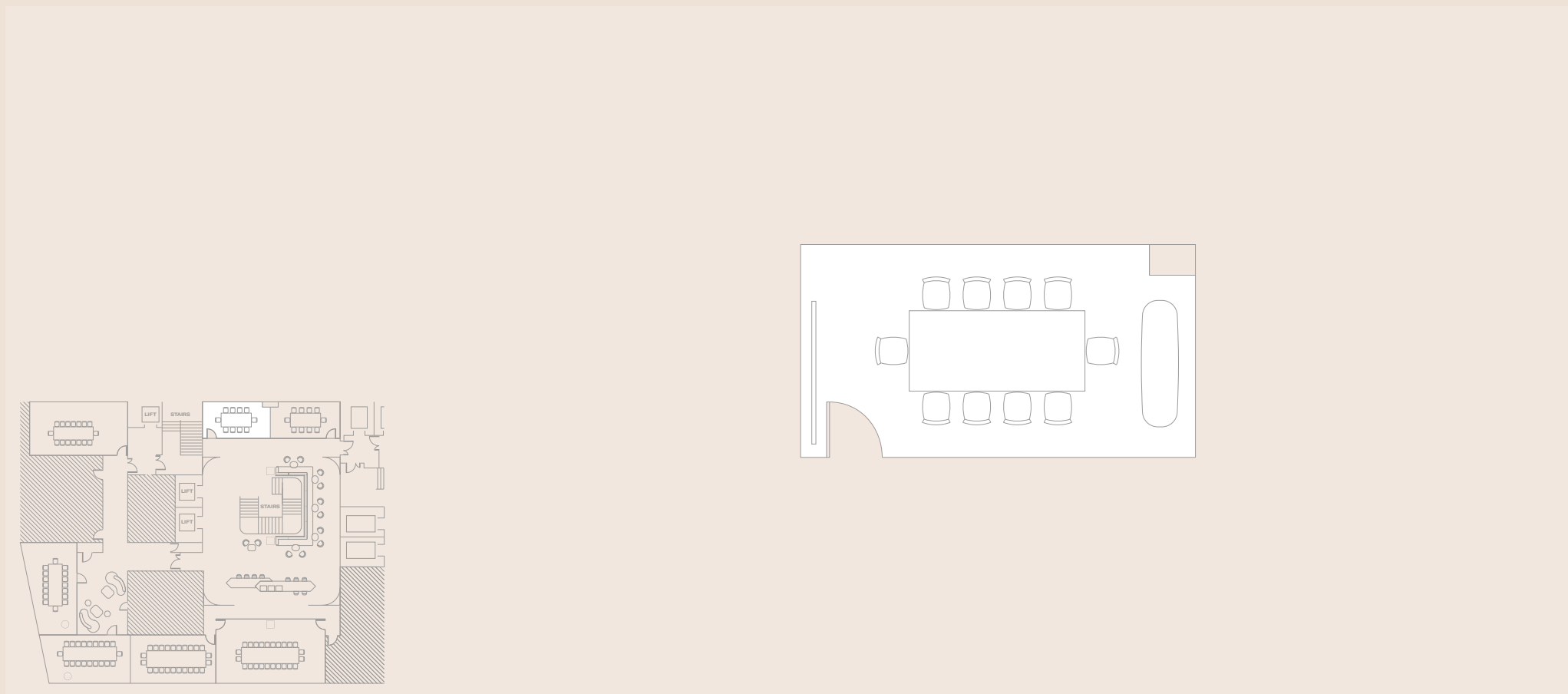


**TATE BRITAIN AND  
HAYWARD GALLERY**

17 tables and 1 long table  
56 capacity at 3 guests per table  
5 guests per long table

For more room layouts tailored to your event,  
please email [events@thelondoner.com](mailto:events@thelondoner.com)

# BOARDROOM

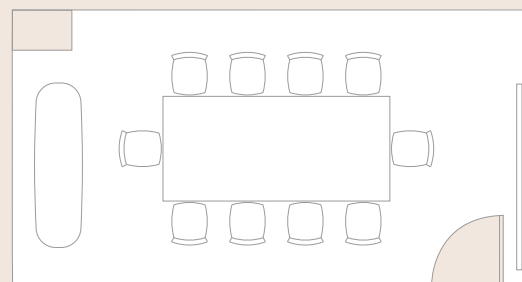
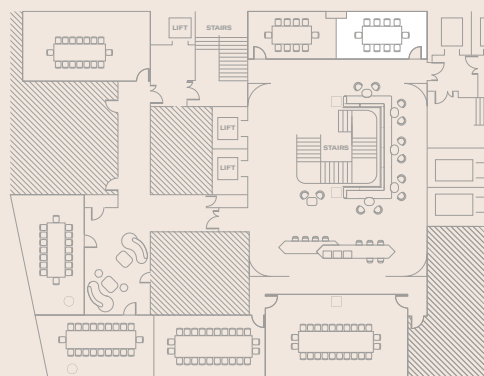


THE NATIONAL GALLERY

1 table  
8 capacity

For more room layouts tailored to your event,  
please email [events@thelondoner.com](mailto:events@thelondoner.com)

# BOARDROOM

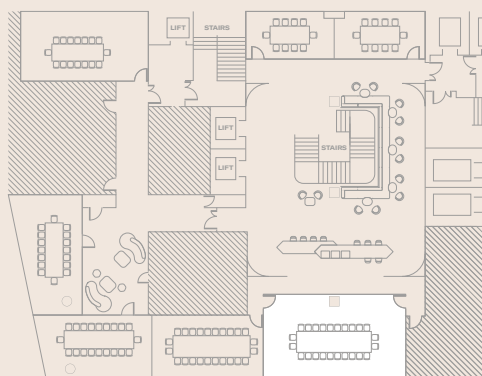
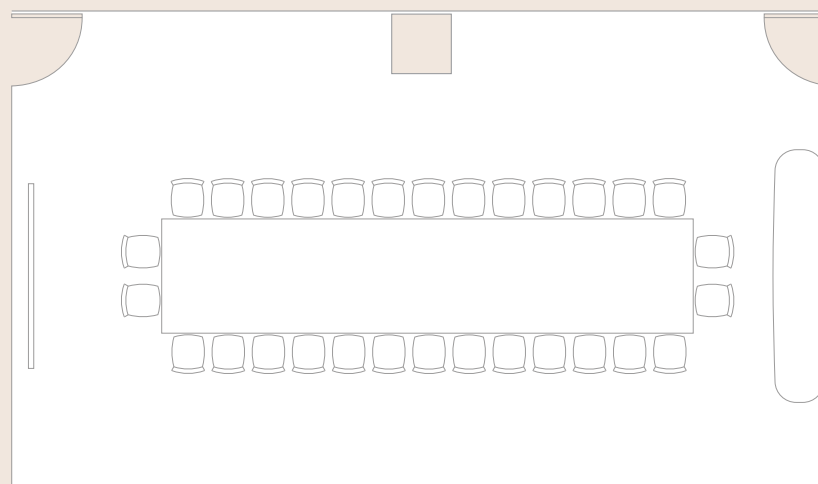


THE NATIONAL GALLERY

1 table  
8 capacity

For more room layouts tailored to your event,  
please email [events@thelondoner.com](mailto:events@thelondoner.com)

# BOARDROOM

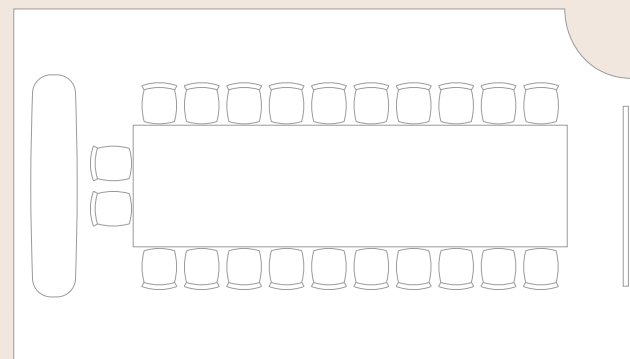
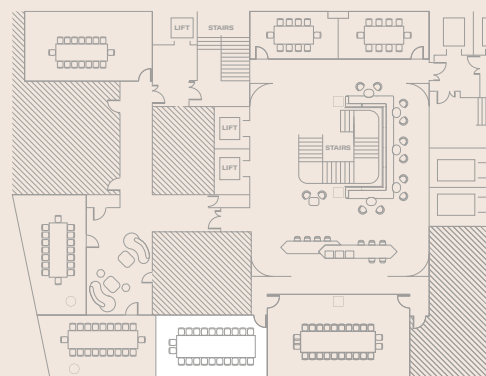


ROYAL ACADEMY OF ARTS

1 table  
30 capacity

For more room layouts tailored to your event,  
please email [events@thelondoner.com](mailto:events@thelondoner.com)

# BOARDROOM

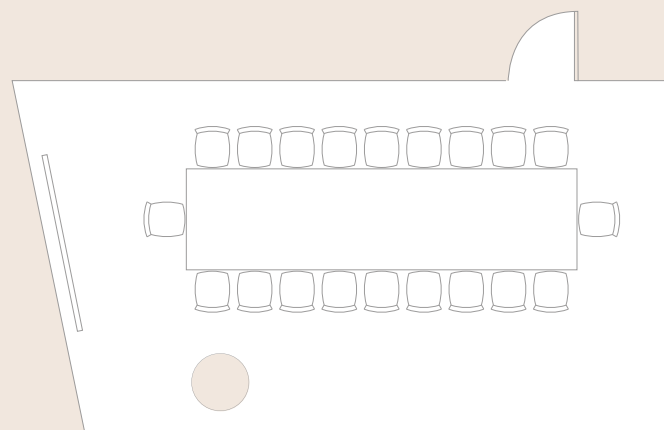
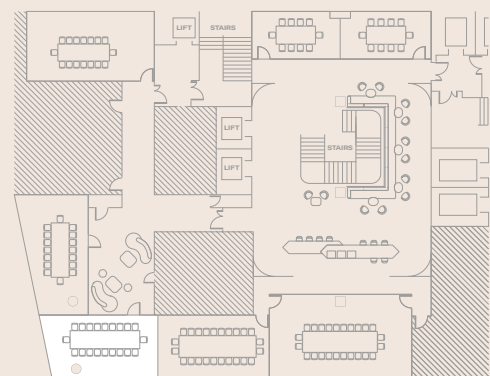


TATE BRITAIN

1 table  
22 capacity

For more room layouts tailored to your event,  
please email [events@thelondoner.com](mailto:events@thelondoner.com)

# BOARDROOM

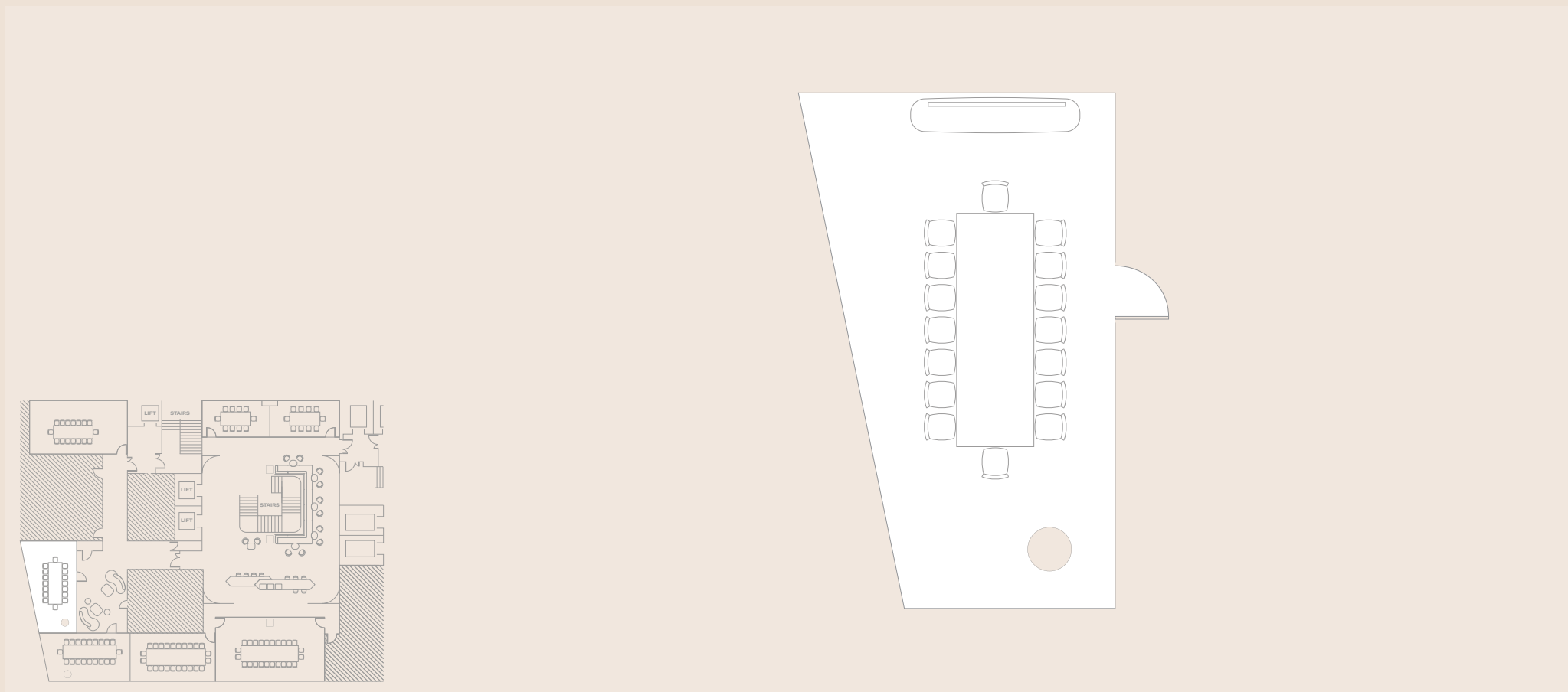


HAYWARD GALLERY

1 table  
20 capacity

For more room layouts tailored to your event,  
please email [events@thelondoner.com](mailto:events@thelondoner.com)

# BOARDROOM

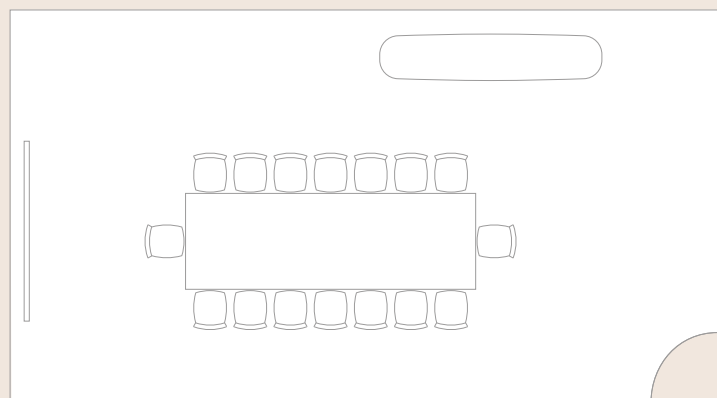
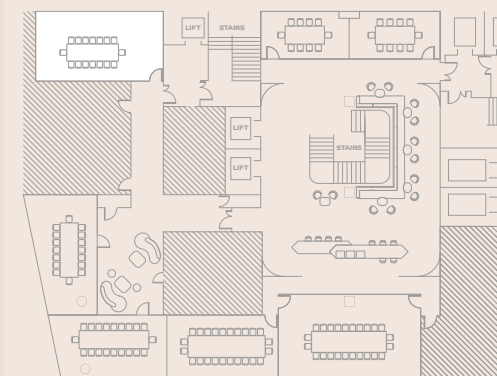


SERPENTINE GALLERY

1 table  
16 capacity

For more room layouts tailored to your event,  
please email [events@thelondoner.com](mailto:events@thelondoner.com)

# BOARDROOM



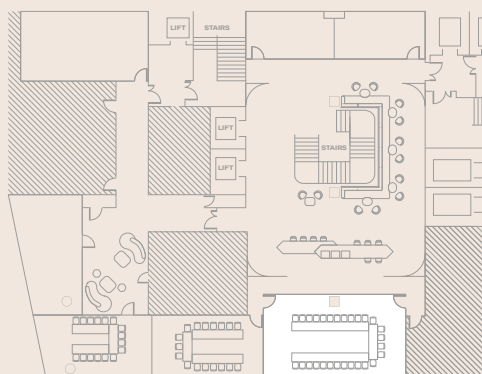
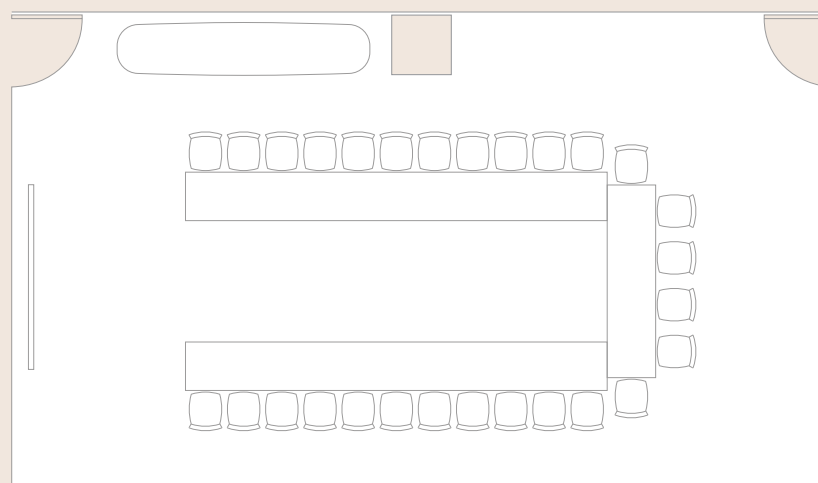
MADDOX GALLERY

1 table  
16 capacity

For more room layouts tailored to your event,  
please email [events@thelondoner.com](mailto:events@thelondoner.com)



# U-SHAPE

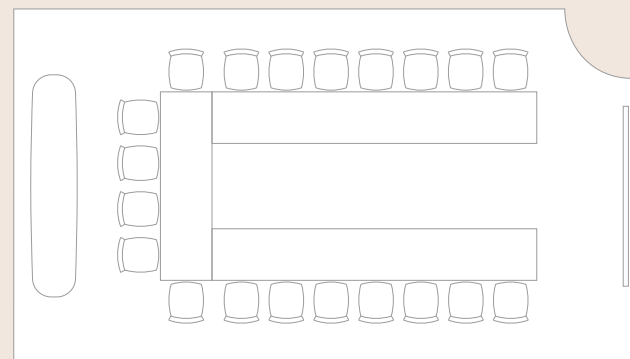
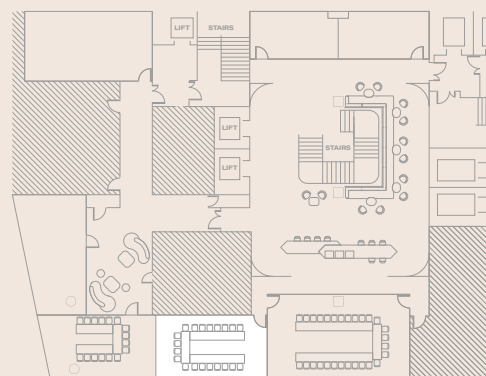


**ROYAL ACADEMY OF ARTS**

2 long tables 1 table  
28 capacity at 6 guests per table  
11 guests per long tables

For more room layouts tailored to your event,  
please email [events@thelondoner.com](mailto:events@thelondoner.com)

# U-SHAPE

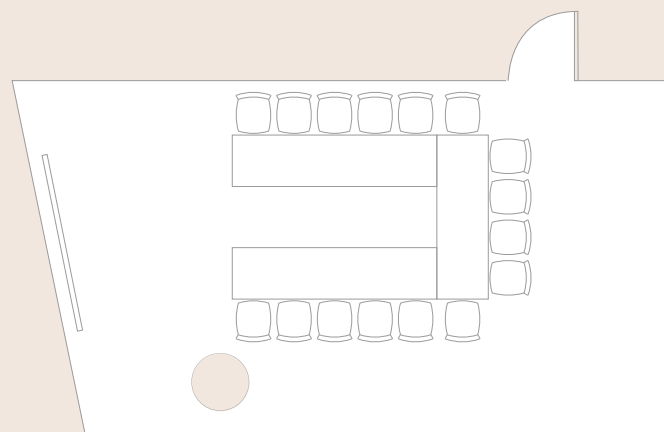
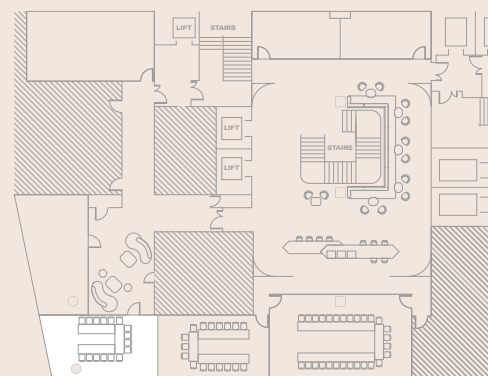


**TATE BRITAIN**

2 long tables 1 table  
20 capacity at 7 guests per table  
6 guests per long table

For more room layouts tailored to your event,  
please email [events@thelondoner.com](mailto:events@thelondoner.com)

# U-SHAPE

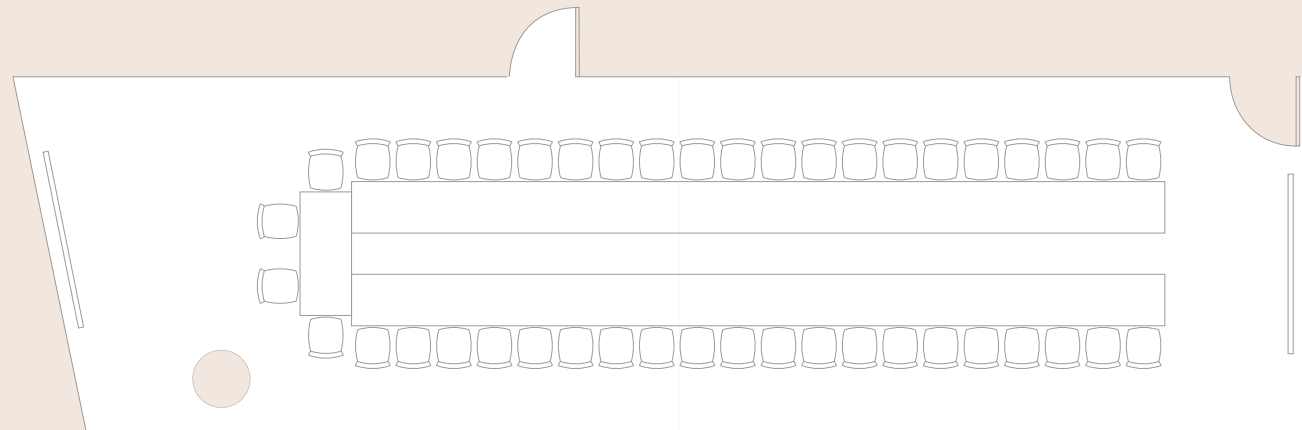
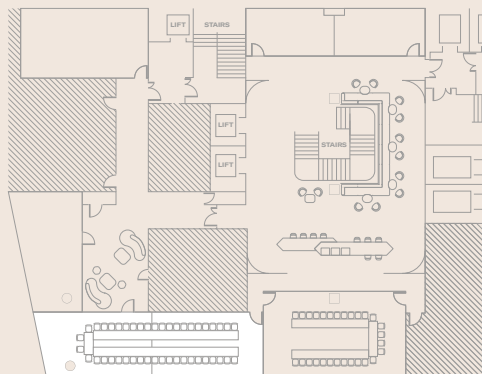


**HAYWARD GALLERY**

3 tables  
16 capacity at 5-6 guests per table

For more room layouts tailored to your event,  
please email [events@thelondoner.com](mailto:events@thelondoner.com)

# U-SHAPE

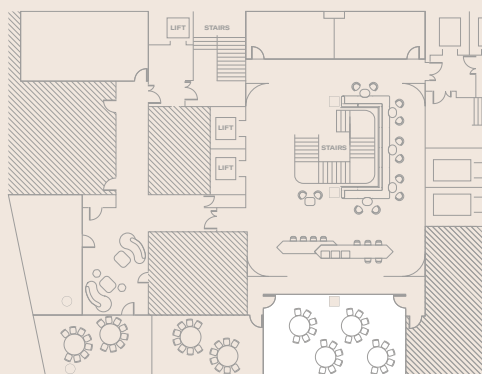
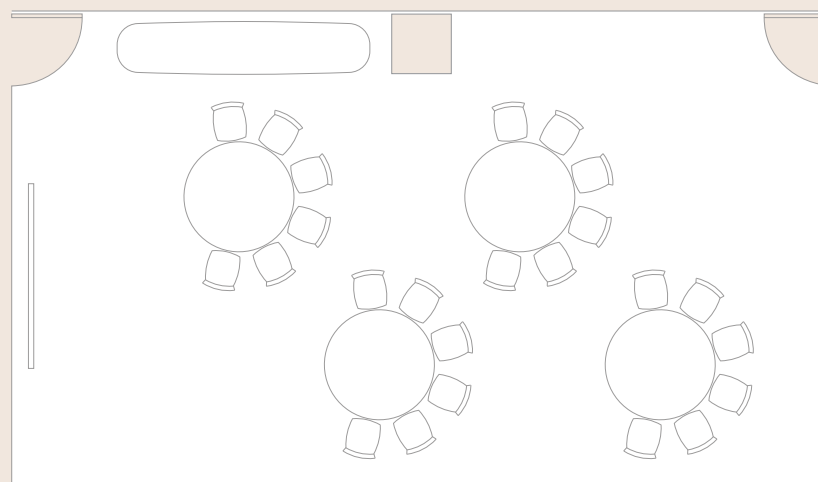


**TATE BRITAIN AND  
HAYWARD GALLERY**

2 long tables 1 table  
44 capacity at 4 guests per table  
20 guests per long tables

For more room layouts tailored to your event,  
please email [events@thelondoner.com](mailto:events@thelondoner.com)

# CABARET

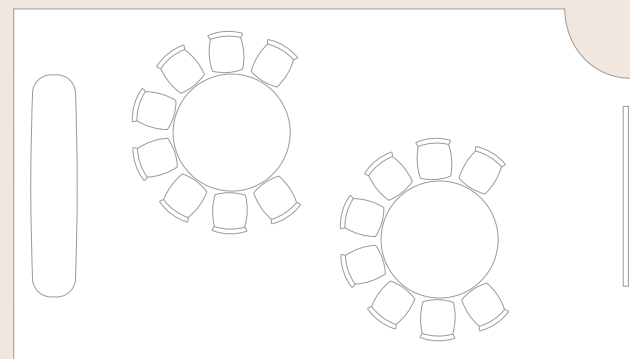
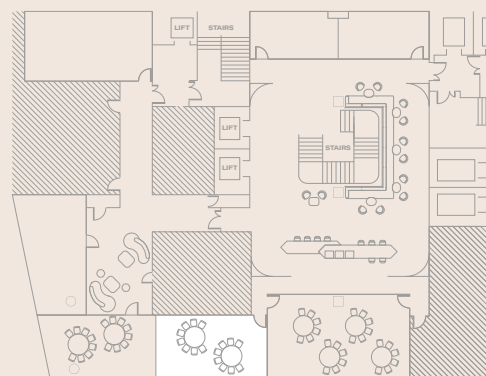


**ROYAL ACADEMY OF ARTS**

4 round tables  
24 capacity at 6 guests per table

For more room layouts tailored to your event,  
please email [events@thelondoner.com](mailto:events@thelondoner.com)

# CABARET

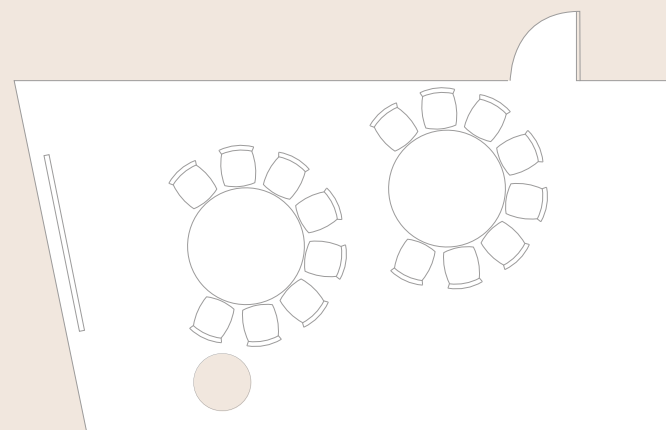
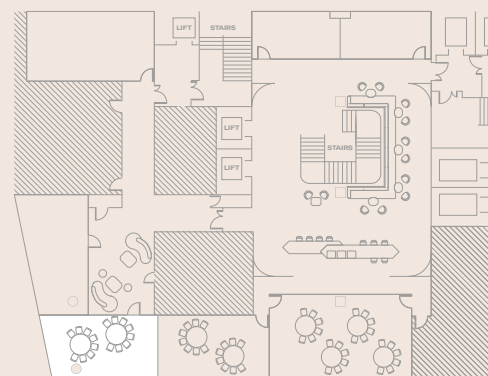


**TATE BRITAIN**

2 round tables  
16 capacity at 8 guests per table

For more room layouts tailored to your event,  
please email [events@thelondoner.com](mailto:events@thelondoner.com)

# CABARET

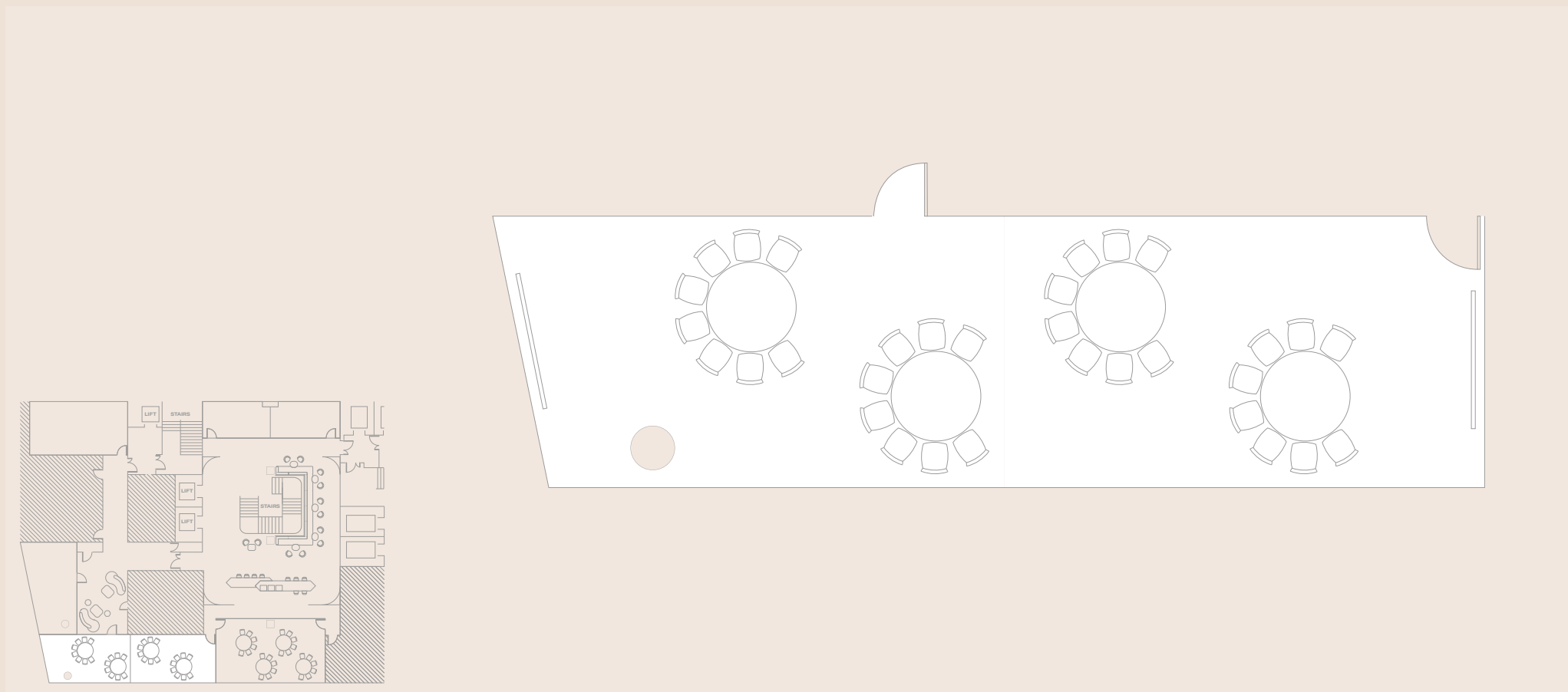


## HAYWARD GALLERY

2 round tables  
16 capacity at 8 guests per table

For more room layouts tailored to your event,  
please email [events@thelondoner.com](mailto:events@thelondoner.com)

# CABARET



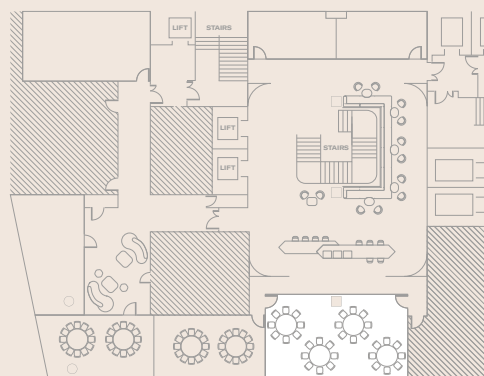
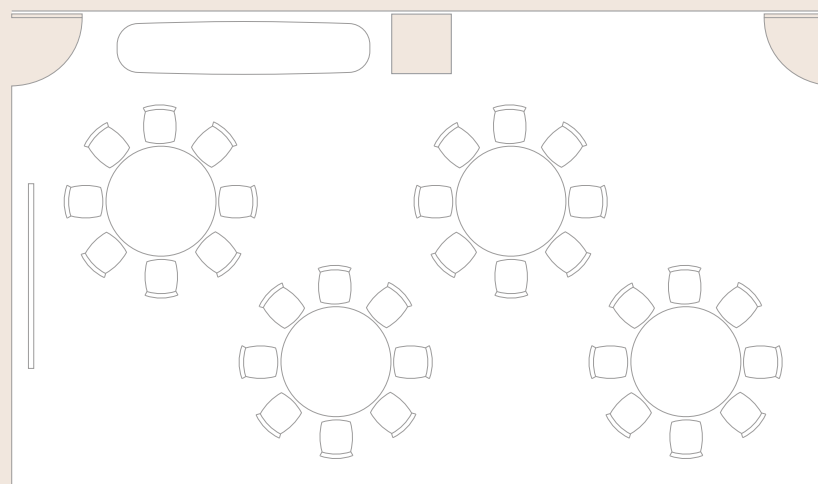
**TATE BRITAIN AND  
HAYWARD GALLERY**

4 round tables  
32 capacity at 8 guests per table

For more room layouts tailored to your event,  
please email [events@thelondoner.com](mailto:events@thelondoner.com)



# DINNER

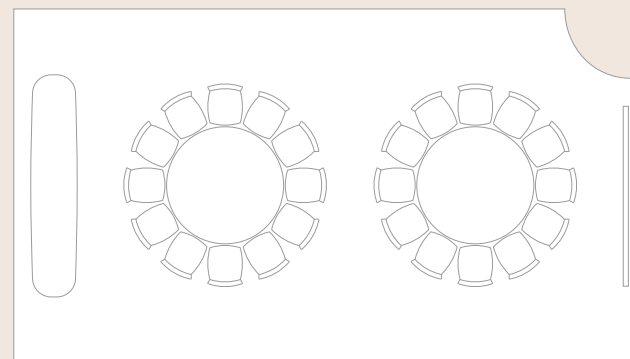
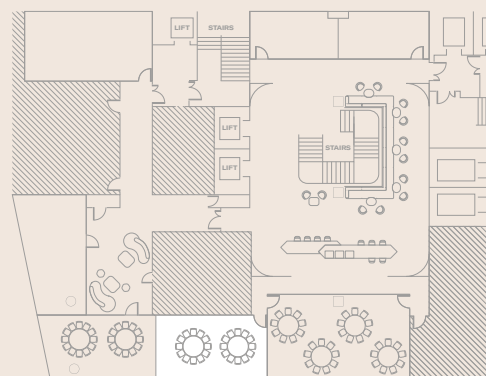


ROYAL ACADEMY OF ARTS

4 round tables  
32 capacity at 8 guests per table

For more room layouts tailored to your event,  
please email [events@thelondoner.com](mailto:events@thelondoner.com)

# DINNER

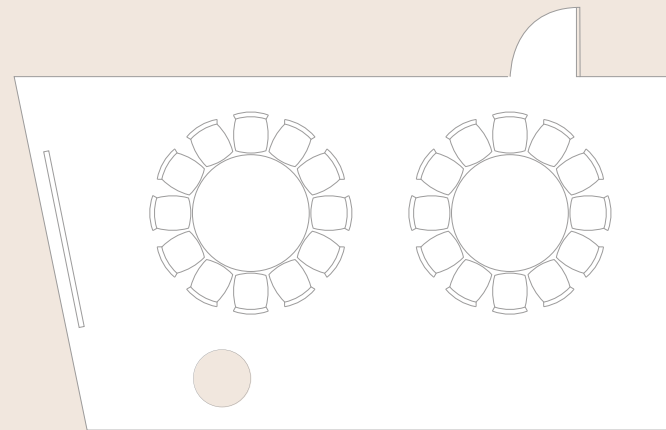
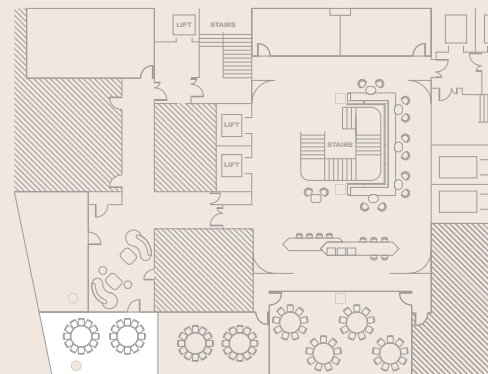


**TATE BRITAIN**

2 round tables  
24 capacity at 12 guests per table

For more room layouts tailored to your event,  
please email [events@thelondoner.com](mailto:events@thelondoner.com)

# DINNER

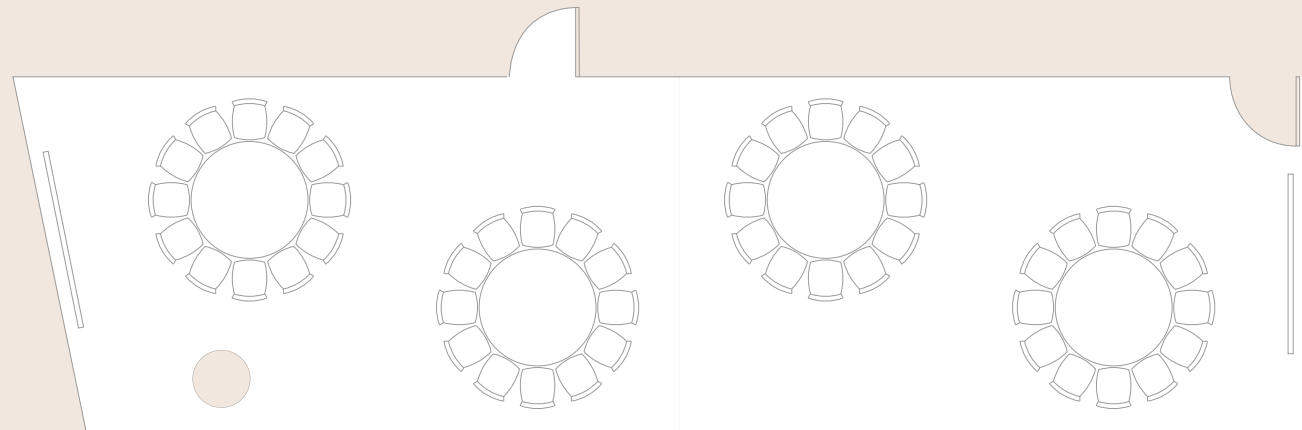
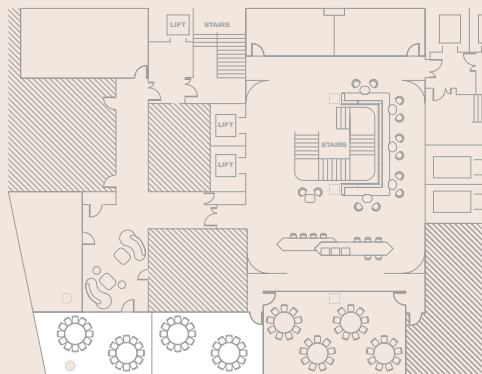


## HAYWARD GALLERY

2 round tables  
24 capacity at 12 guests per table

For more room layouts tailored to your event,  
please email [events@thelondoner.com](mailto:events@thelondoner.com)

# DINNER



**TATE BRITAIN AND  
HAYWARD GALLERY**

4 round tables  
48 capacity at 12 guests per table

For more room layouts tailored to your event,  
please email [events@thelondoner.com](mailto:events@thelondoner.com)



THE LONDONER

LEICESTER SQ.

38 Leicester Square  
London WC2H 7DX  
+44 (0)20 7451 0101  
[thelondoner.com](http://thelondoner.com)