



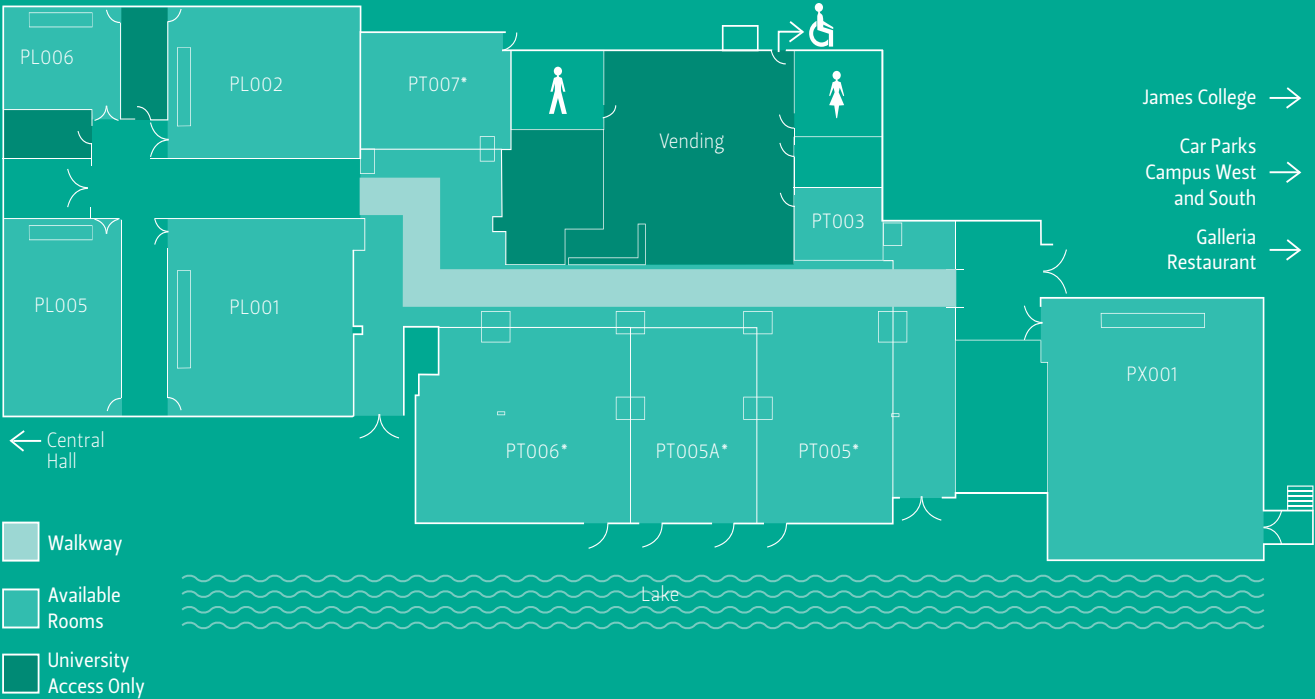
Exhibition Centre

Laying out your floor plan

We are happy to work with you on the design of your floor plan and can provide suggested floor plans.

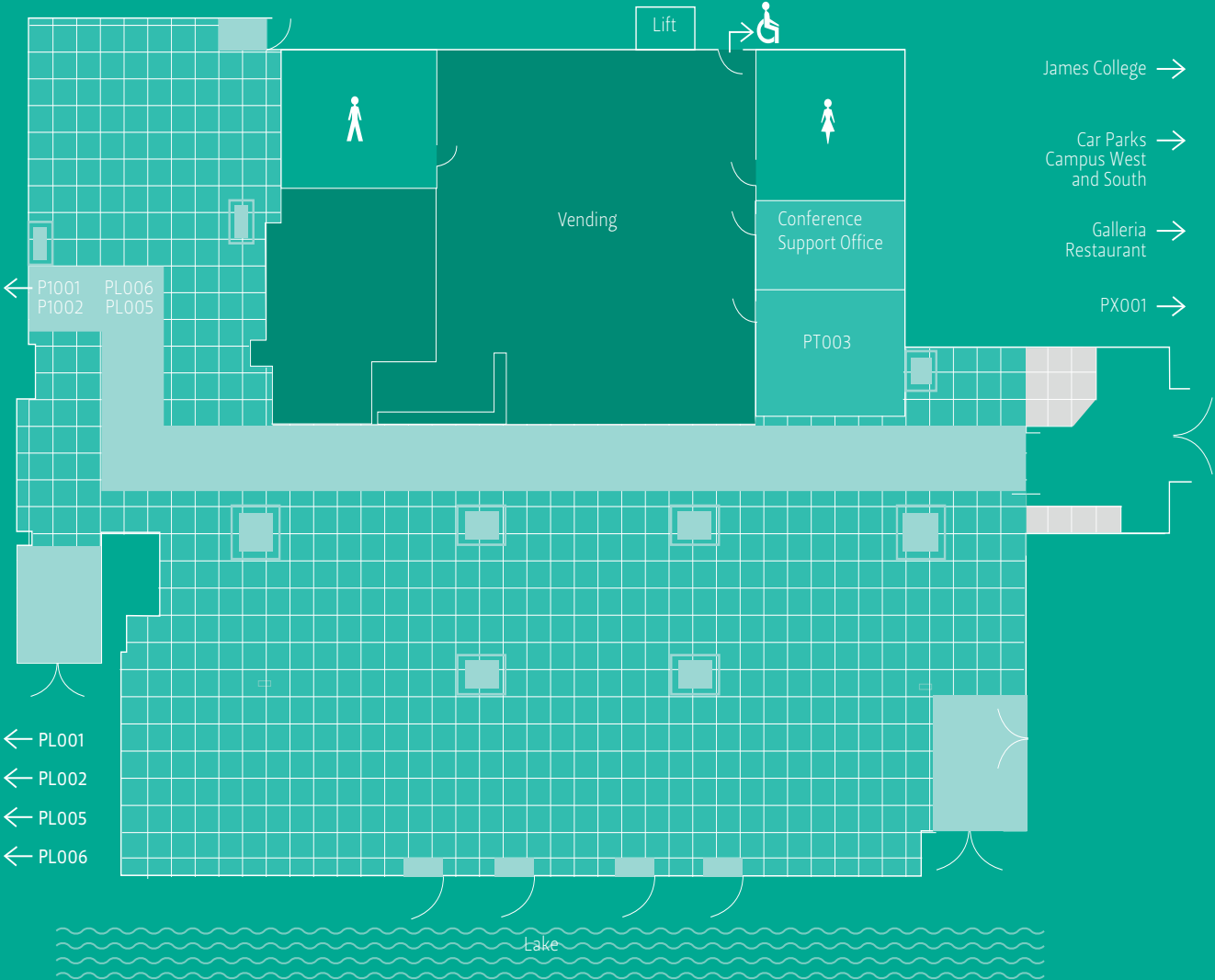
Room	Capacity	Default Layout	Dimensions
PX001	299	Tiered Theatre	14.8m x 25.0m
PL001	171	Tiered Theatre	11.9m x 12.9m
PL002	120	Tiered Theatre	9.9m x 10.3m
PL005	66	Flat Floor Classroom	7.0m x 10.2m
PL006	38	Flat Floor Classroom	6.9m x 7.9m
PT003		Office	
PT005*	63	Flat Floor Classroom	12.7m x 13.4m
PT005A*	100	Open Reception Area	9.8m x 12.8m
PT006*	63	Flat Floor Classroom	12.8m x 15.3m
PT007*	45	Flat Floor Classroom	7.9m x 10.5m
PT103	20	Flat Floor Classroom	6.9m x 5.6m
PT111	20	Boardroom	6.10 x 8.0m
Galleria Restaurant	450	Dining	

*these spaces can be used as individual spaces or combine to create an exhibition area for 900m², or approximately 40 stands.





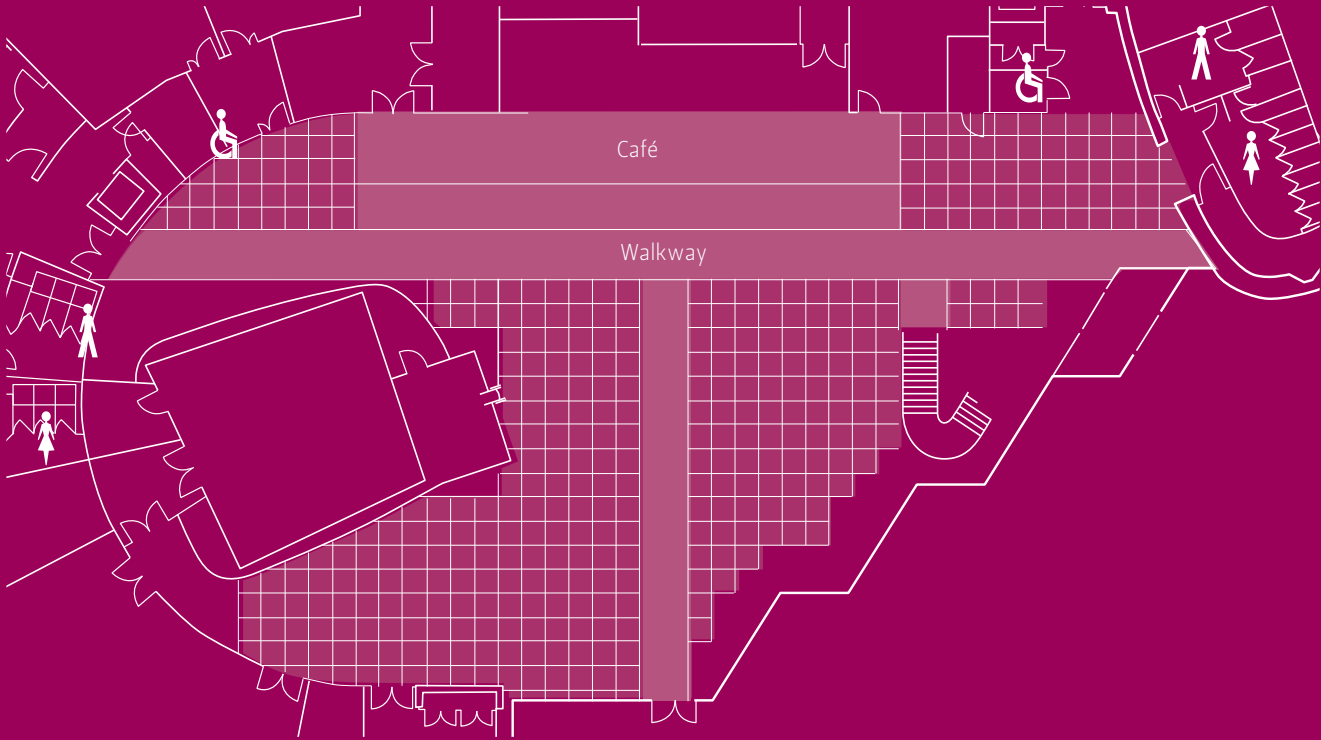
Exhibition Space Floor Plan



- Available Rooms
- Walkway / Emergency exit
- Column
- University Access Only
- Possible Use (last let)
- Exhibition space
- 1m²



The Ron Cooke Hub Ground Floor Exhibition Plan



- Walkway
- Exhibition space

Not to scale

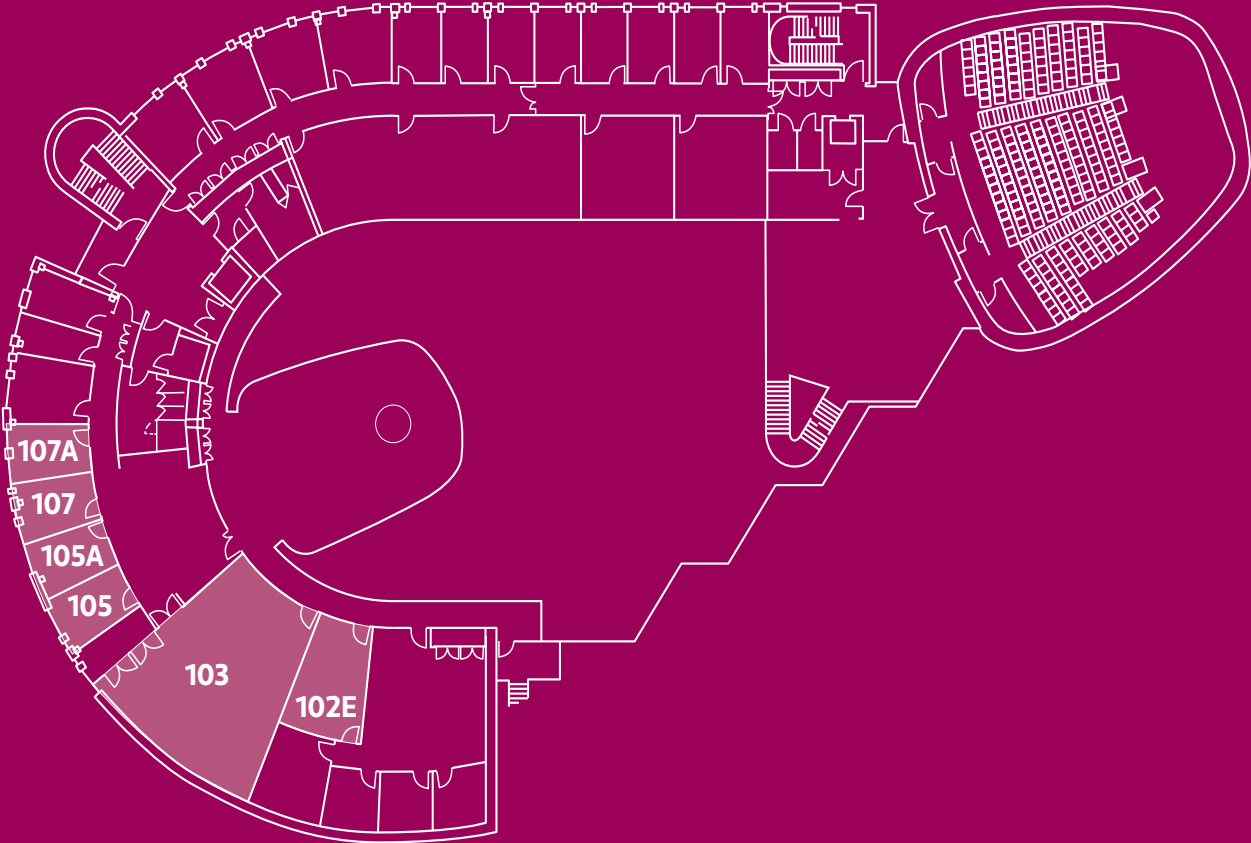


The Ron Cooke Hub Ground Floor Plan



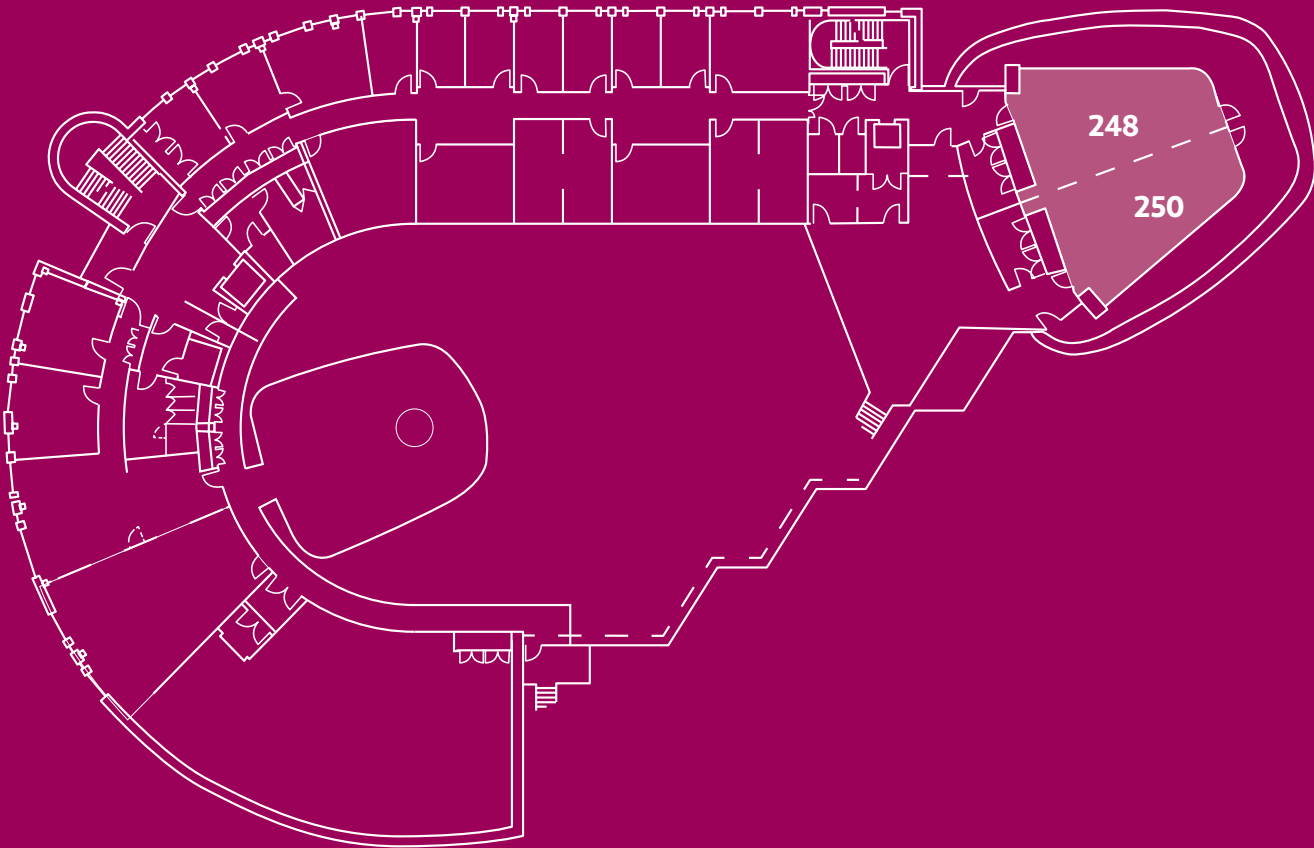


The Ron Cooke Hub First Floor Plan





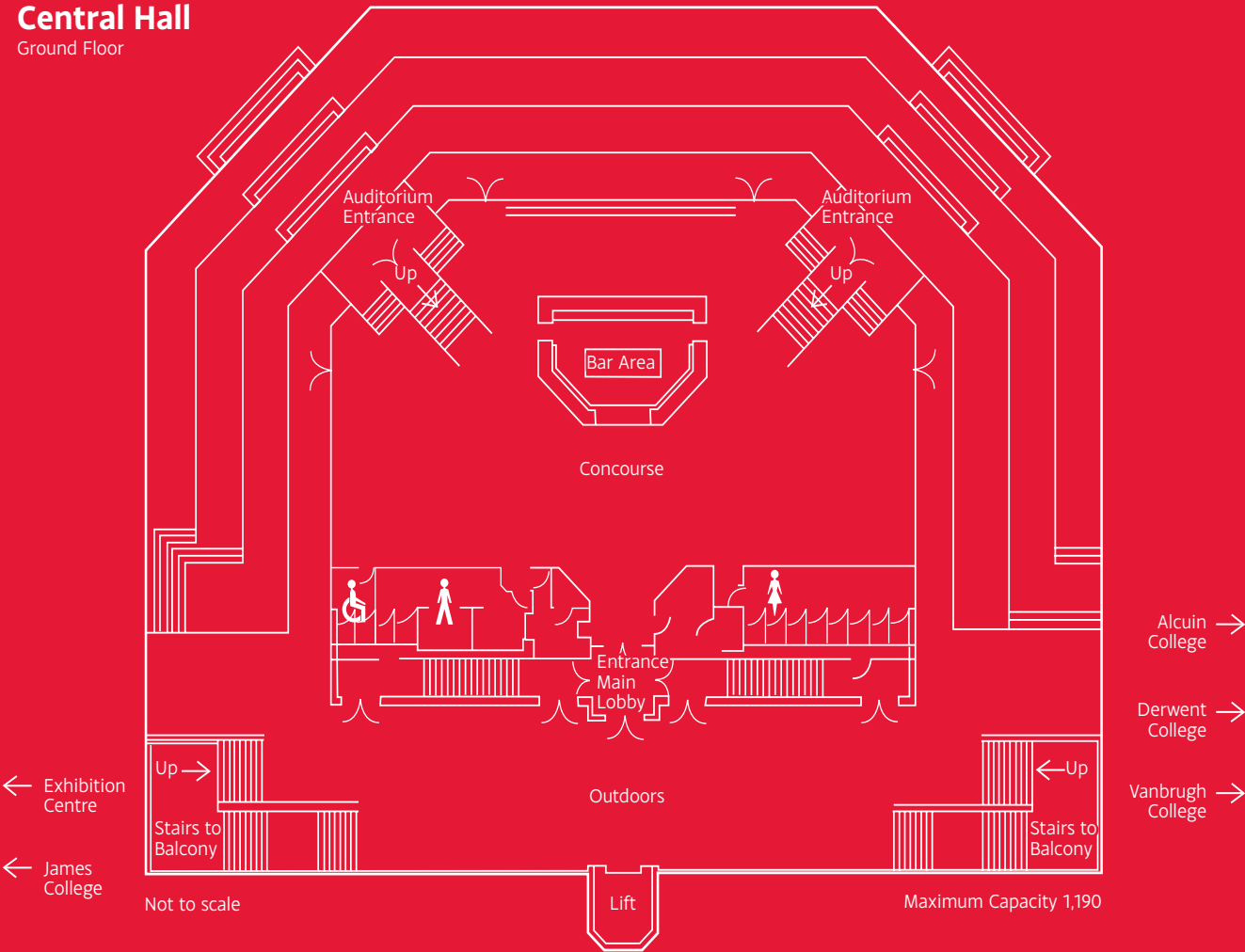
The Ron Cooke Hub Second Floor Plan





Central Hall

Ground Floor



General Specifications

Maximum access for off-loading only: Height 3.42m, width 4.31m.

Access to all levels by lift
(width 1.1m, height 2m, length 1.8m, max load 1,134kg).

Sound: D&B audio system with Behringer X32 mixer, 4x lapel radio mics, 4x handheld radio mics, audio feeds into dressing rooms, backstage and concourse.

Projection: 1x 6m wide central screen and 2x 5m wide side screens, all with Christie 10,000 lumen full HD projectors.

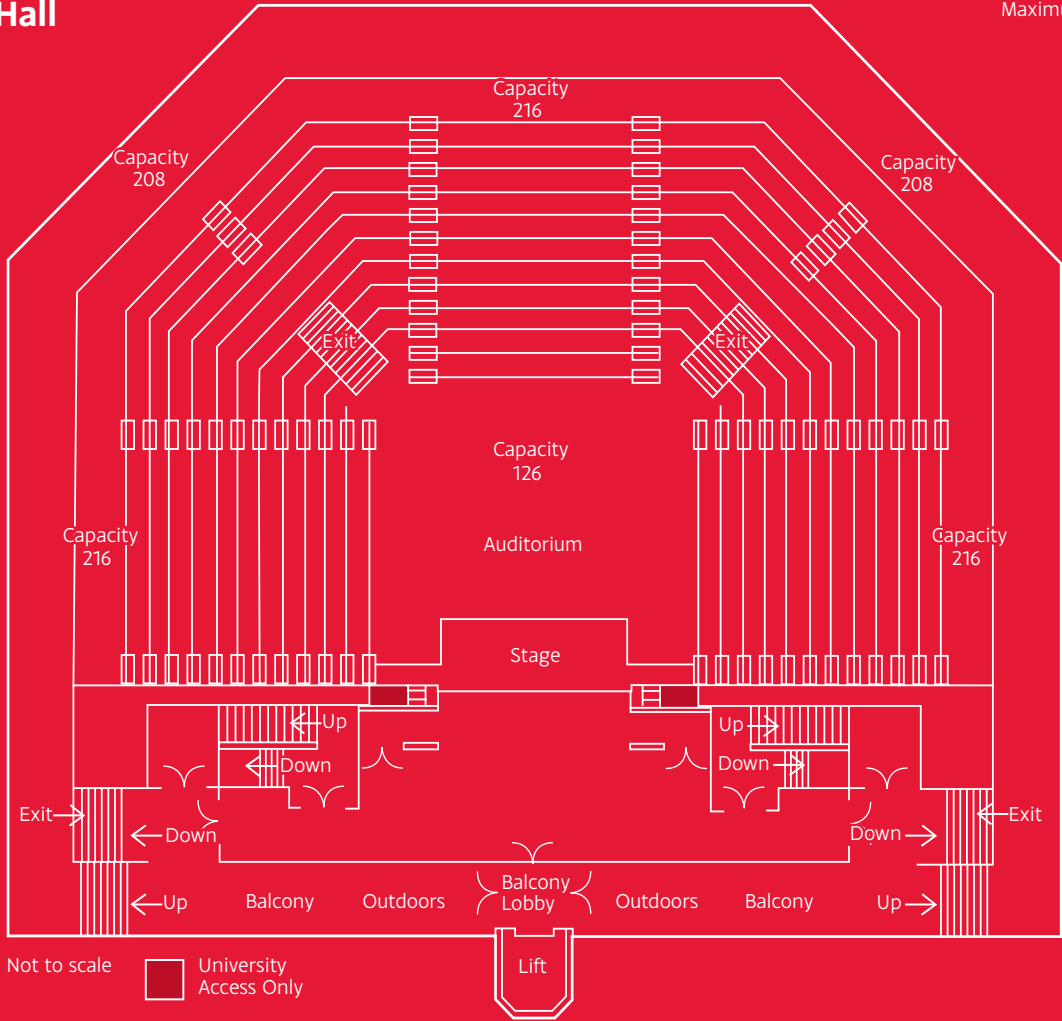
Communications: Wireless & wired internet connection throughout the building.



Central Hall

First Floor

Maximum Capacity 1,190



On the first floor, doors from the lift (width 1.1m, height 2m, length 1.8m, max load 1,134kg) open on backstage level with access to stage.

Disabled access by lift to first floor (stage and back stage area) and to second floor (auditorium, dressing rooms and disabled toilet).

Backstage: Backstage / green room / reception area 14.24 x 4.2m. No wing space. Lift and stair access. Internal telephone hand-set.

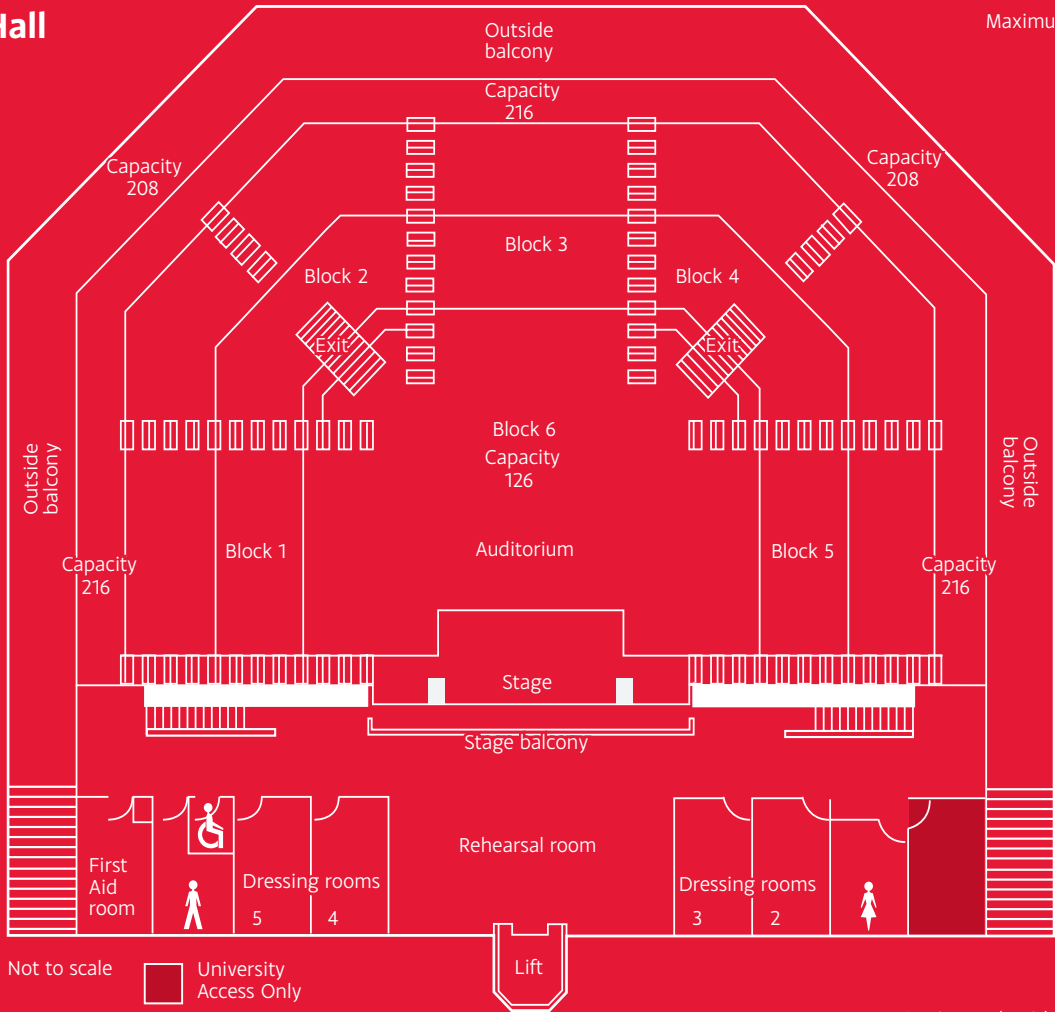
Touring Mains Supply: 63A 3phase and 32A single phase on stage right. 32A single phase in projection box. 13A supplies in auditorium for exhibition use.

Stage lighting: Congo Junior lighting desk with fader wing, 96 x 1.2kW of production dimming.



Central Hall
Second Floor

Maximum Capacity 1,190



Dressing rooms: Second floor: Access to area via backstage stairway or lift from ground floor. Four rooms 2.18m x 5.63m with adjacent rehearsal/band room to accommodate around 50 performers.

Get in touch with us today to see how we can help you plan your perfect event

☎ Telephone us on 01904 328431

✉ Email us on conferences@york.ac.uk

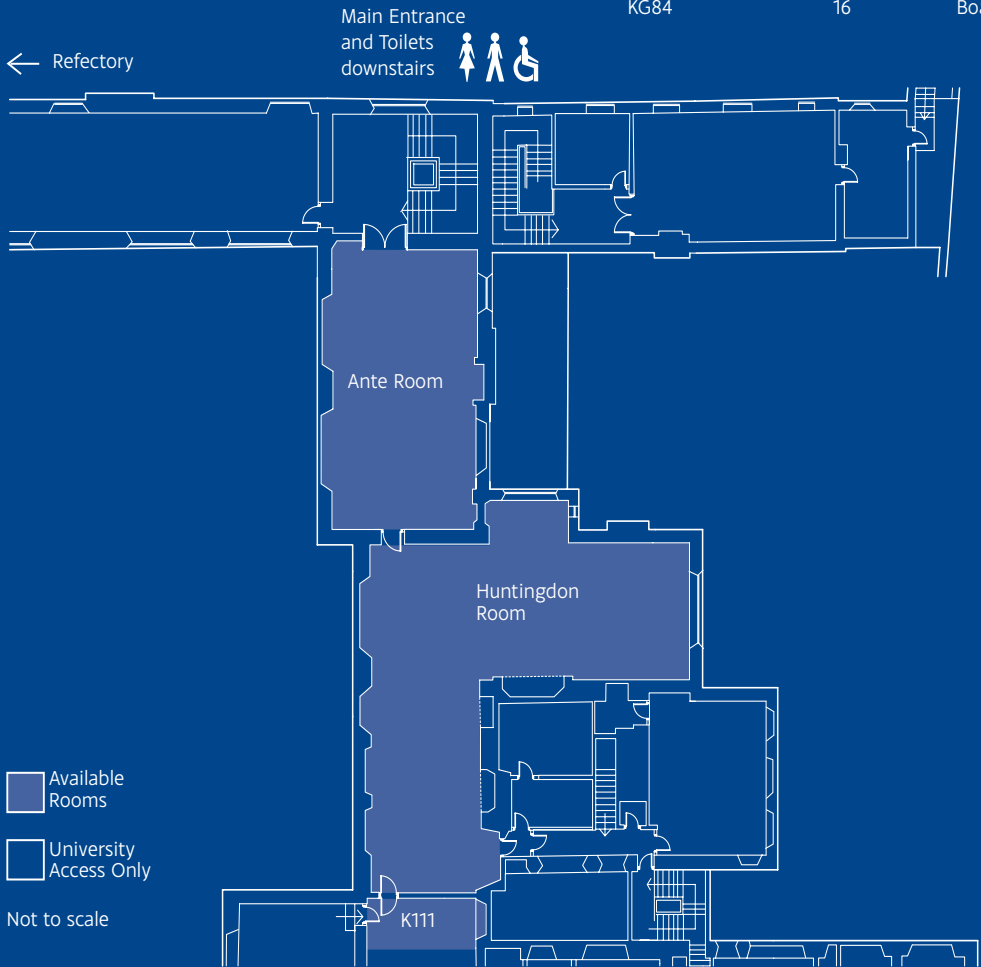
🌐 Go online at www.yorkconferences.com



University of York
York YO10 5DD

King's Manor

Room Name	Capacity	Default Layout	Dimensions
Huntingdon Room	90	Flexible	14.80m x 5.00m
Ante Room		Flexible	6.43m x 11.90m
K111	24	Boardroom	7.16m x 10.80m
K133	52	Tiered Lecture Theatre	5.00m x 10.38m
KG33	24	Boardroom	5.55m x 9.24m
K155	12	Boardroom	5.10m x 6.62m
K157	16	Boardroom	4.70m x 6.00m
K159	50	Flat Lecture Theatre	6.00m x 12.90m
K187	12	Boardroom	4.50m x 5.70m
KG07	17	Boardroom	5.20m x 8.80m
KG84	16	Boardroom	3.50m x 4.50m



Get in touch with us today to see how we can help you plan your perfect event

- ☎ Telephone us on 01904 328431
- ✉ Email us on conferences@york.ac.uk
- 🌐 Go online at yorkconferences.com