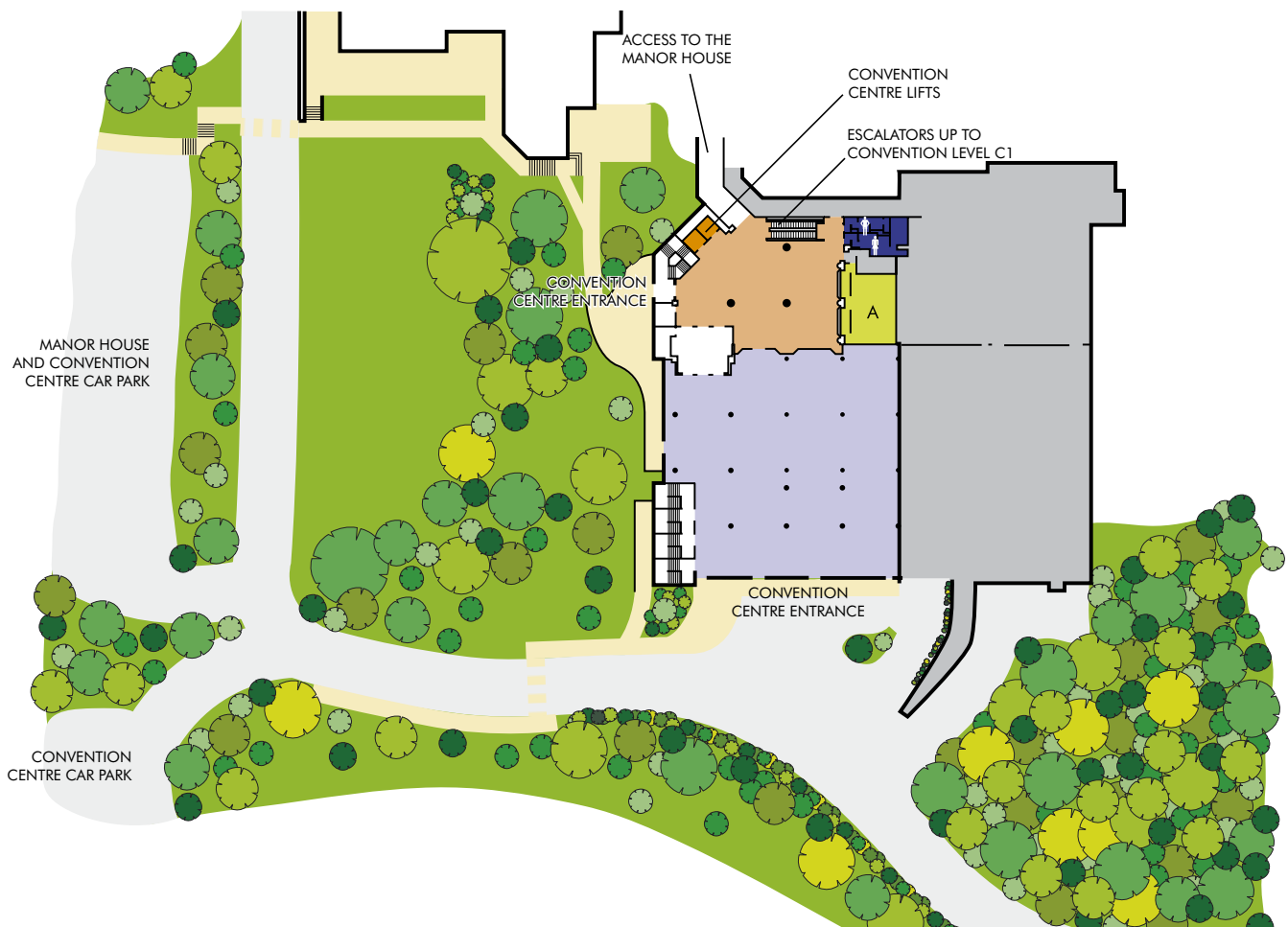


CONVENTION LEVEL C

THE EXHIBITION HALL



The Celtic Manor Resort



EXHIBITION HALL LOBBY

KEY	
	Ethernet Port (wall)
	240V, 13A Sockets (floor)
	240V, 13A Sockets (wall)
	63A 3PNE (see form)
	Microphone Socket (wall)
	Pillar circumference 222cm
	Pillar circumference 284cm
	Pillar circumference 462cm
	Door
	Access

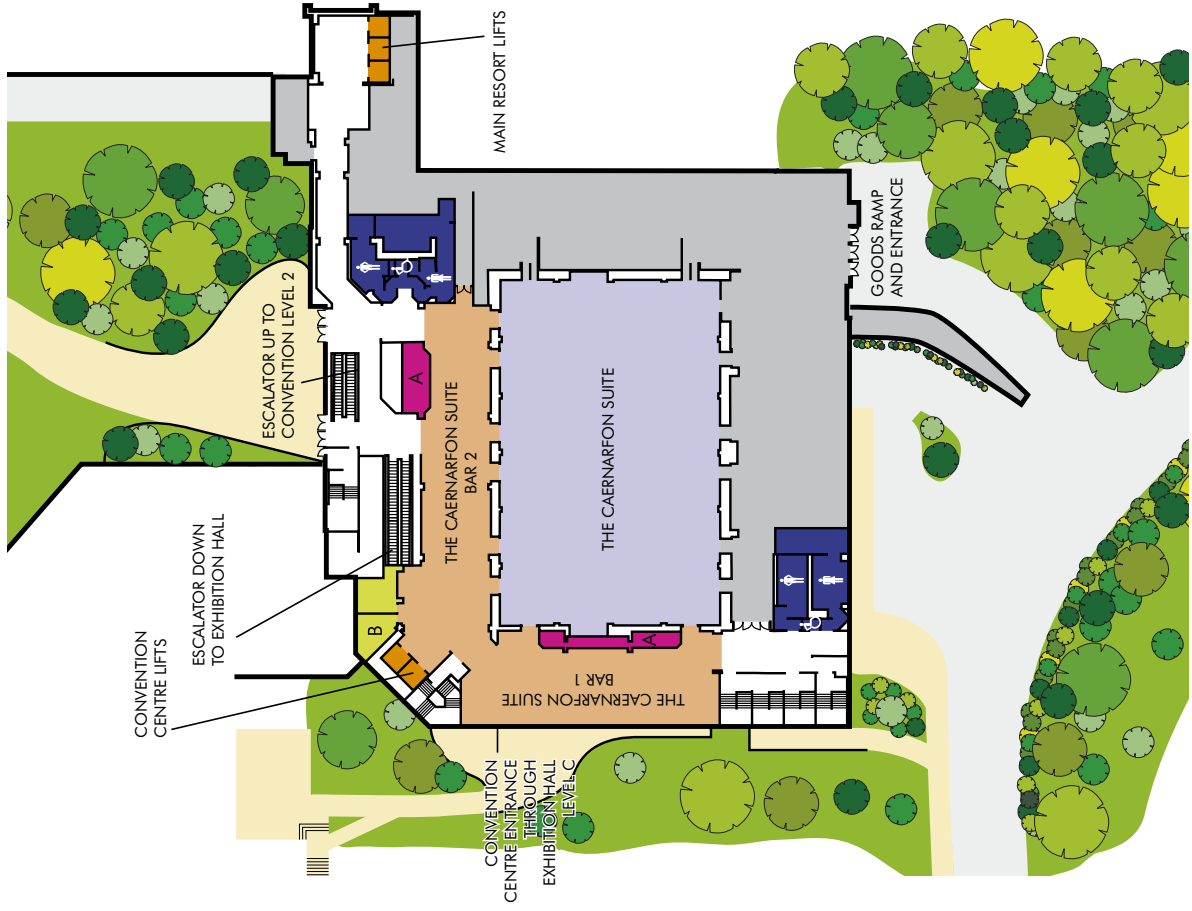


Door Width 2.40m
Door Height 1.50m

EXHIBITION HALL

Goods Door Height 3.80m

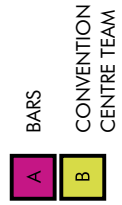
CONVENTION LEVEL C1 THE CAERNARFON SUITE



The Caernarfon Suite is the largest function room at the Resort and is situated on Convention Level 1. It can accommodate 1200 delegates theatre style or 900 for banquets. There are two adjoining pre-function areas for delegate registration or receptions.

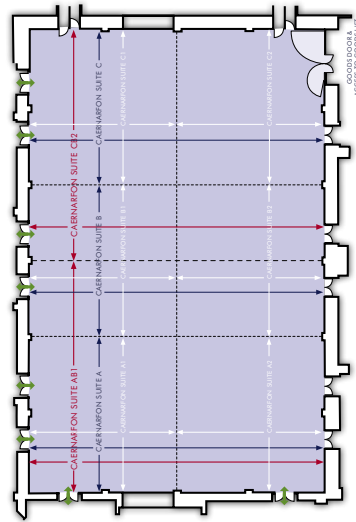
The suite can be divided into halves, thirds or further combinations. Features include a hi-tech PA system, audio visual and lighting scene control with touch screen roving controls, theatre style lighting, vehicular access, ceiling hoists, retractable chandeliers, table pin spots, telecommunications, power, data/ISDN and trunking.

The Caernarfon Suite regularly plays host to large conferences, banquets, product launches, award ceremonies and weddings. High profile events in recent years have included The Celtic Manor Wales Open Gala Dinner, New Year's Eve Ice Kingdom, Brendan Cole Live at the Manor and our annual Celtic Manor Resort Wedding Fayre. The room undoubtedly has the versatility, scale and ability to meet the requirements of any event. Complimentary WiFi internet access is available on this floor.



CONVENTION LEVEL C1 THE CAERNARFON SUITE FLOOR

CAERNARFON SUITE - DIMENSIONS



GOODS DOOR
Width (overall) 1.42
Height 2.00
Height (net) 1.72

GOODS LIFT
Width (overall) 2.38
Width (net) 2.10
Height (overall) 3.25
Height (net) 2.97
Depth (overall) 0.88
Depth (net) 0.60

DANCE FLOOR
Width (overall) 3.14
Width (net) 2.86
Depth (overall) 3.0
Depth (net) 2.72
Note: Dimensions are to the face of the lift and are subject to change without notice. The floor is not level.

CAERNARFON SUITE FULL

Dimension (overall) 43.87 x 27.45
Dimension (net) 42.00 x 26.50
Dimension (to lift) 42.00 x 26.50
Height (overall) 4.27
Height (net) 3.99
Floor to ceiling height 3.00

CAERNARFON SUITE A11 OR C12

Dimension (overall) 26.50 x 21.43
Dimension (net) 24.63 x 20.58
Dimension (to lift) 24.63 x 20.58
Height (overall) 4.27
Height (net) 3.99
Floor to ceiling height 3.00

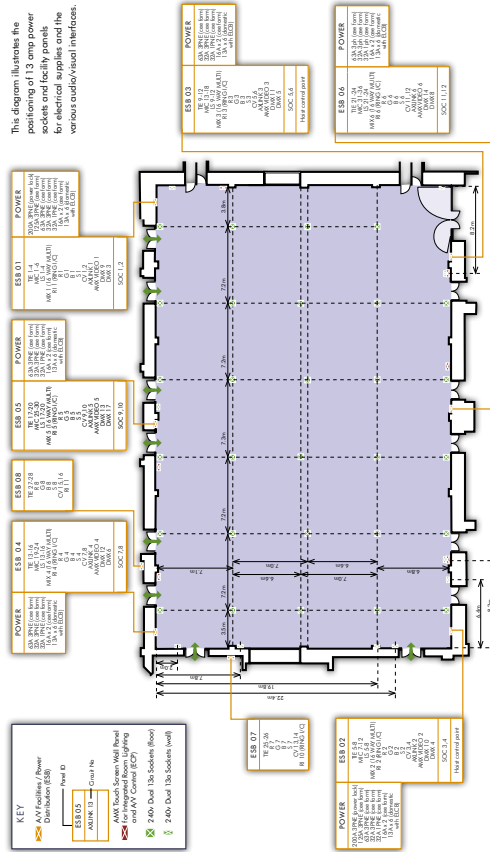
CAERNARFON SUITE A, B OR C

Dimension (overall) 27.25 x 14.44
Dimension (net) 25.38 x 13.59
Dimension (to lift) 25.38 x 13.59
Height (overall) 4.27
Height (net) 3.99
Floor to ceiling height 3.00

CAERNARFON SUITE A1, B1, C1, A2, B2 OR C2

Dimension (overall) 14.67 x 13.40
Dimension (net) 12.80 x 12.55
Dimension (to lift) 12.80 x 12.55
Height (overall) 4.27
Height (net) 3.99
Floor to ceiling height 3.00

Note: Dimensions are to the face of the lift and are subject to change without notice. The floor is not level.



This diagram illustrates the positioning of 13 amp power sockets and facility panels for electrical supplies and the various audio/visual interfaces.

KEY

- 13A/16A Sockets / Power
- 13A/16A Sockets with 240V Dual 13A Sockets
- 240V Dual 13A Sockets
- Panel ID
- ESB 01 - 07
- POWER 01 - 06
- 13A/16A Sockets with 240V Dual 13A Sockets and ANY Control (ECU)
- 240V Dual 13A Sockets (with)

ESB 01 - POWER
13A/16A Sockets with 240V Dual 13A Sockets and ANY Control (ECU)
Panel ID: ESB 01
Voltage: 230V AC
Current: 16A
Panel Type: 13A/16A Sockets with 240V Dual 13A Sockets and ANY Control (ECU)
SOC 1.1.2

ESB 02 - POWER
13A/16A Sockets with 240V Dual 13A Sockets and ANY Control (ECU)
Panel ID: ESB 02
Voltage: 230V AC
Current: 16A
Panel Type: 13A/16A Sockets with 240V Dual 13A Sockets and ANY Control (ECU)
SOC 1.1.2

ESB 03 - POWER
13A/16A Sockets with 240V Dual 13A Sockets and ANY Control (ECU)
Panel ID: ESB 03
Voltage: 230V AC
Current: 16A
Panel Type: 13A/16A Sockets with 240V Dual 13A Sockets and ANY Control (ECU)
SOC 1.1.2

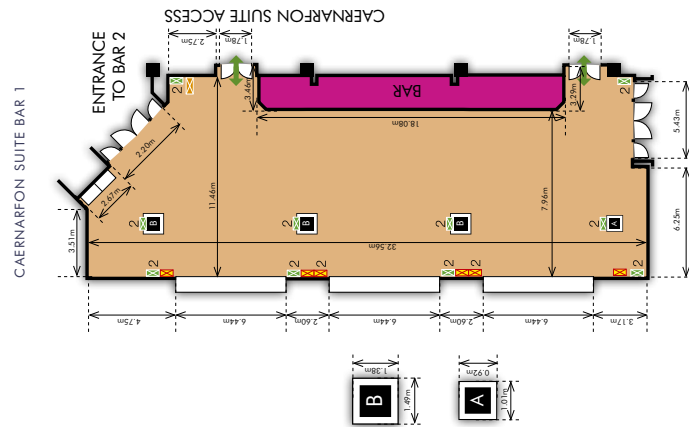
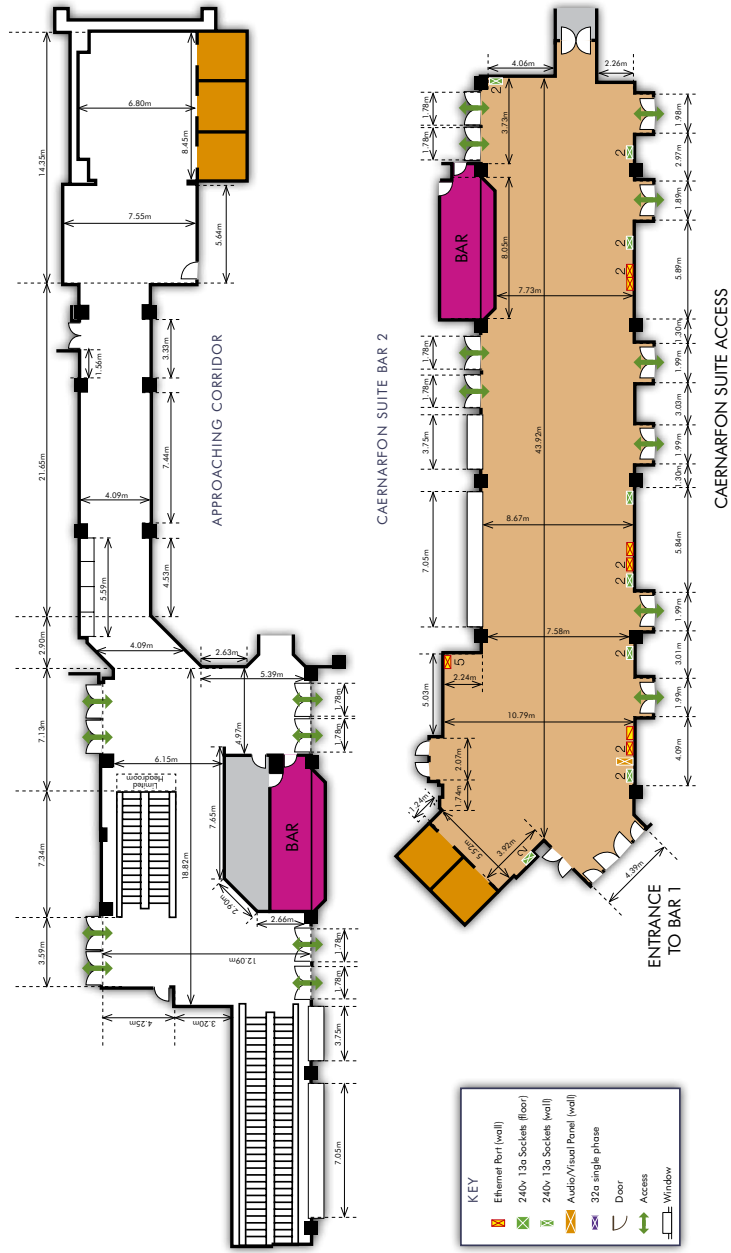
ESB 04 - POWER
13A/16A Sockets with 240V Dual 13A Sockets and ANY Control (ECU)
Panel ID: ESB 04
Voltage: 230V AC
Current: 16A
Panel Type: 13A/16A Sockets with 240V Dual 13A Sockets and ANY Control (ECU)
SOC 1.1.2

ESB 05 - POWER
13A/16A Sockets with 240V Dual 13A Sockets and ANY Control (ECU)
Panel ID: ESB 05
Voltage: 230V AC
Current: 16A
Panel Type: 13A/16A Sockets with 240V Dual 13A Sockets and ANY Control (ECU)
SOC 1.1.2

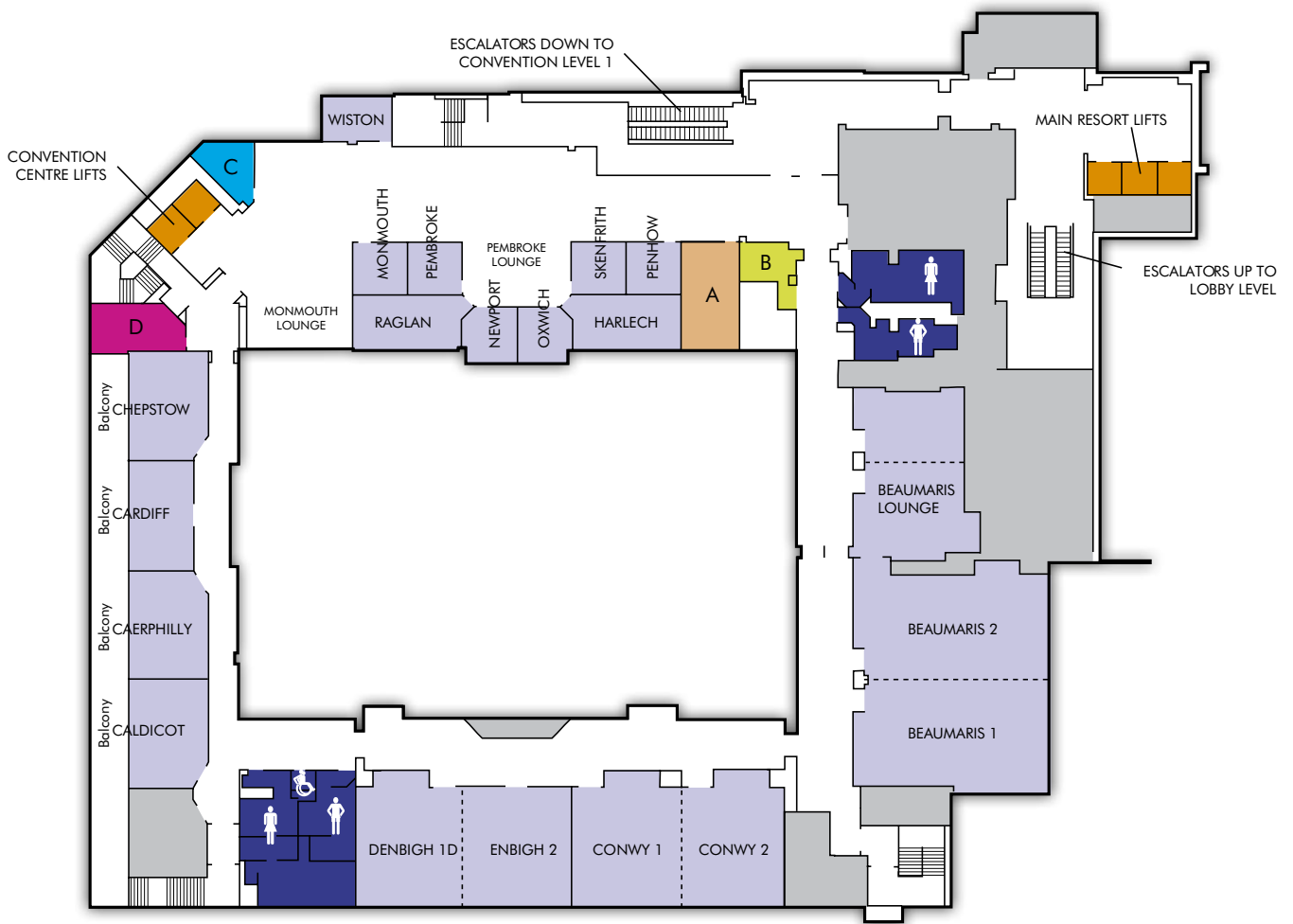
ESB 06 - POWER
13A/16A Sockets with 240V Dual 13A Sockets and ANY Control (ECU)
Panel ID: ESB 06
Voltage: 230V AC
Current: 16A
Panel Type: 13A/16A Sockets with 240V Dual 13A Sockets and ANY Control (ECU)
SOC 1.1.2

ESB 07 - POWER
13A/16A Sockets with 240V Dual 13A Sockets and ANY Control (ECU)
Panel ID: ESB 07
Voltage: 230V AC
Current: 16A
Panel Type: 13A/16A Sockets with 240V Dual 13A Sockets and ANY Control (ECU)
SOC 1.1.2

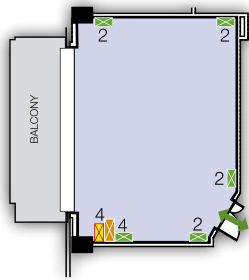
CONVENTION LEVEL C1



The Celtic Manor Resort

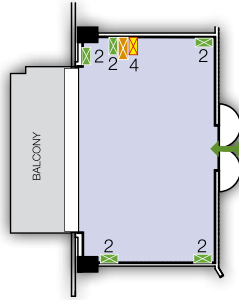


CHEPSTOW



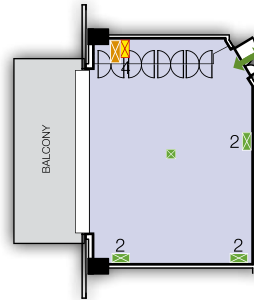
Dimensions (metres) 8.83 x 6.40
 Dimensions (sq. m) 56.5
 Dimensions (feet) 29.97 x 21
 Dimensions (sq. ft) 629.37
 Height (metres) 3
 Maximum People 34
 Door Width 1.40m

CARDIFF



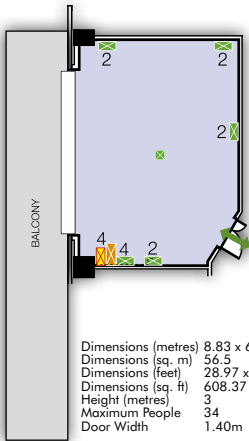
Dimensions (metres) 8.83 x 5.35
 Dimensions (sq. m) 47.25
 Dimensions (feet) 28.97 x 17.55
 Dimensions (sq. ft) 508.42
 Height (metres) 3
 Maximum People 34
 Door Width 1.80m

CAERPHELLY



Dimensions (metres) 7.83 x 6.40
 Dimensions (sq. m) 50.11
 Dimensions (feet) 25.69 x 21
 Dimensions (sq. ft) 539.5
 Height (metres) 3
 Maximum People 34
 Door Width 1.40m

CALDICOT



Dimensions (metres) 8.83 x 6.4
 Dimensions (sq. m) 56.5
 Dimensions (feet) 28.97 x 21
 Dimensions (sq. ft) 608.37
 Height (metres) 3
 Maximum People 34
 Door Width 1.40m

HARLECH



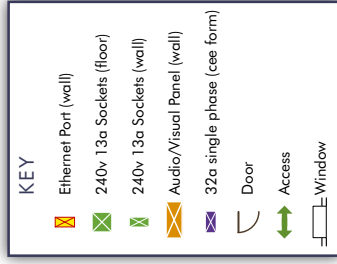
Dimensions (metres) 8.83 x 4.30
 Dimensions (sq. m) 37.97
 Dimensions (feet) 28.97 x 14.11
 Dimensions (sq. ft) 408.77
 Height (metres) 3
 Maximum People 20
 Door Width 1.00m
 Door Height 2.20m

RAGLAN

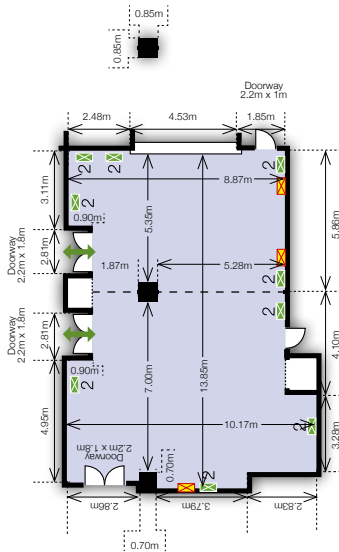


Dimensions (metres) 8.83 x 4.30
 Dimensions (sq. m) 37.97
 Dimensions (feet) 28.97 x 14.11
 Dimensions (sq. ft) 408.77
 Height (metres) 3
 Maximum People 20
 Door Width 1.00m
 Door Height 2.20m

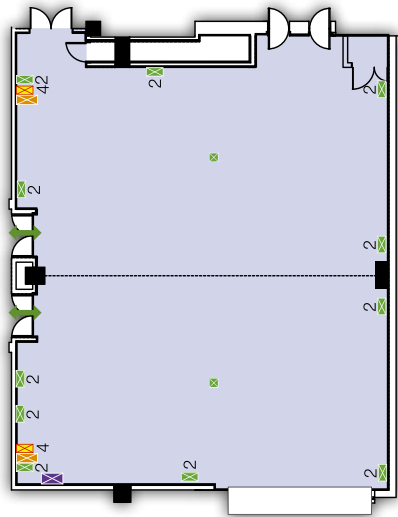
CONVENTION LEVEL C2



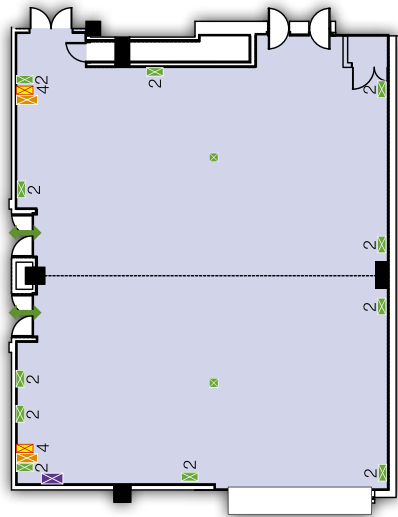
BEAUMARIS LOUNGE



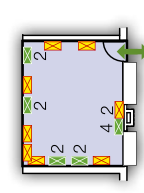
BEAUMARIS 1



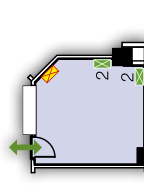
BEAUMARIS 2



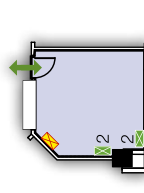
WISTON



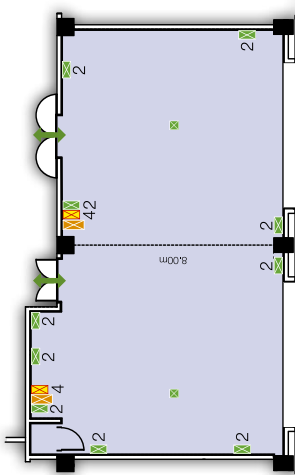
OXWICH



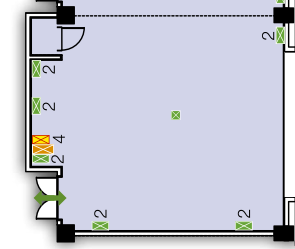
NEWPORT



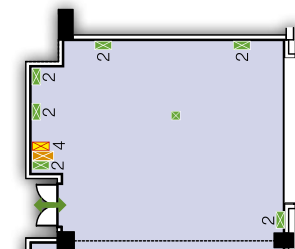
DENBIGH 1



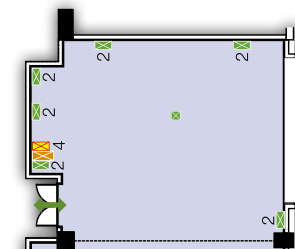
DENBIGH 2



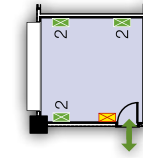
CONWY 1



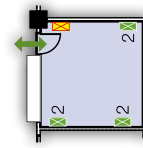
CONWY 2



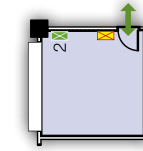
SKENFRITH



PENHOW



PEMBROKE



MONMOUTH

